

# ROW-5 - Removable Outfield Wall, 5' High

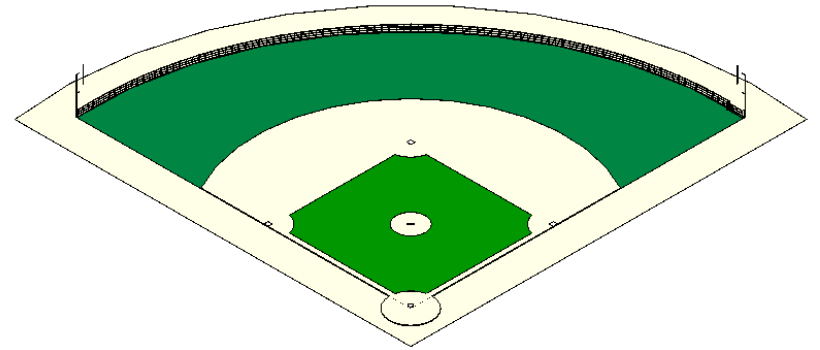
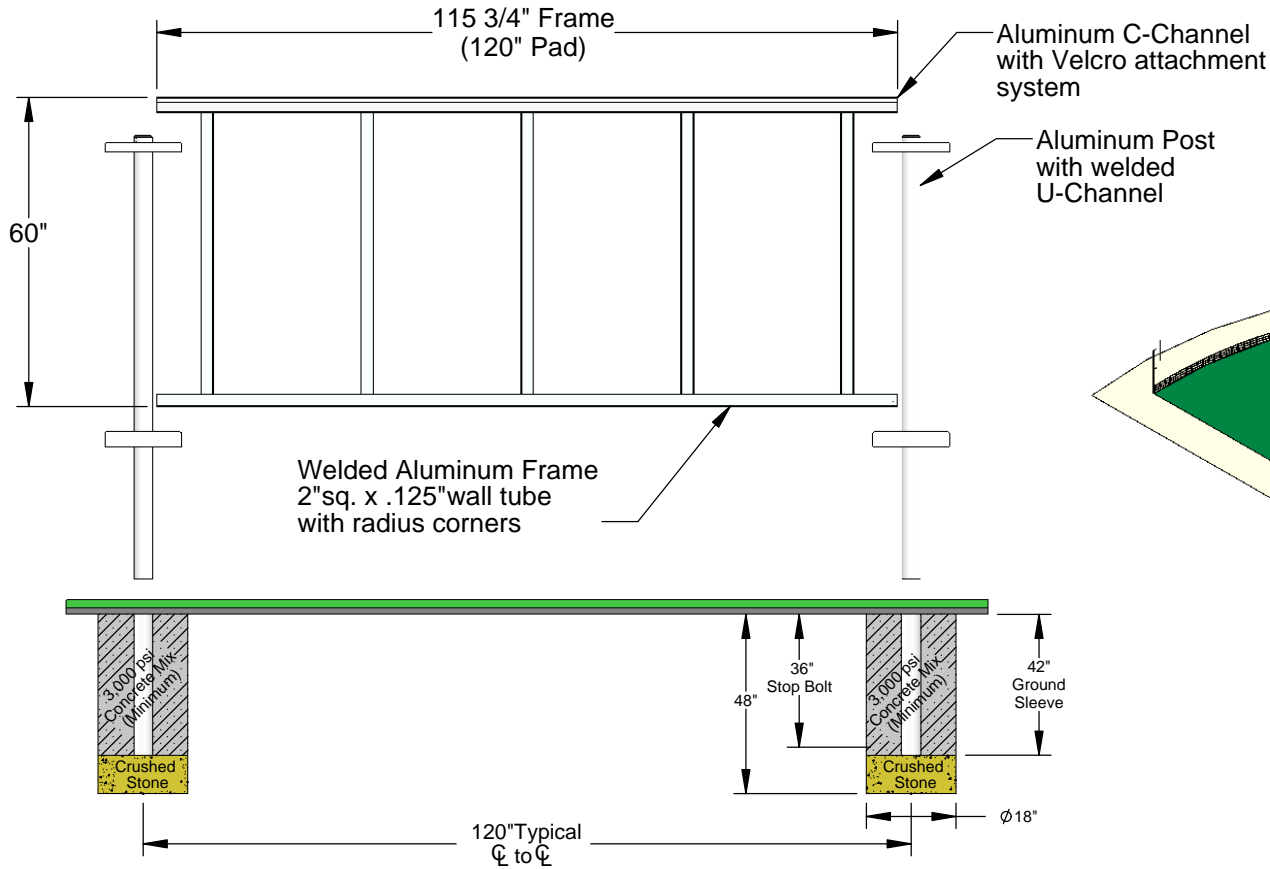
## Panel Sizes and Layout

### Project:

### Notes:

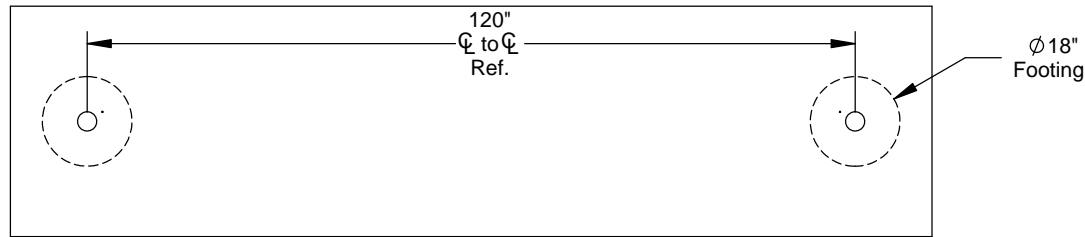
- Overall Linear Feet: \_\_\_\_\_ Outfield Length
- Total # Panels: \_\_\_\_\_ (O.A.L./10')
- Panel's Size: 60" x 120"
- Total # Posts: \_\_\_\_\_ [(O.A.L./10')+1]

D  
C  
B  
A



### COLOR CHART:

BLUE	GREEN	NAVY BLUE	BLACK
RED	YELLOW	BRIGHT ORANGE	MAROON



# AAE

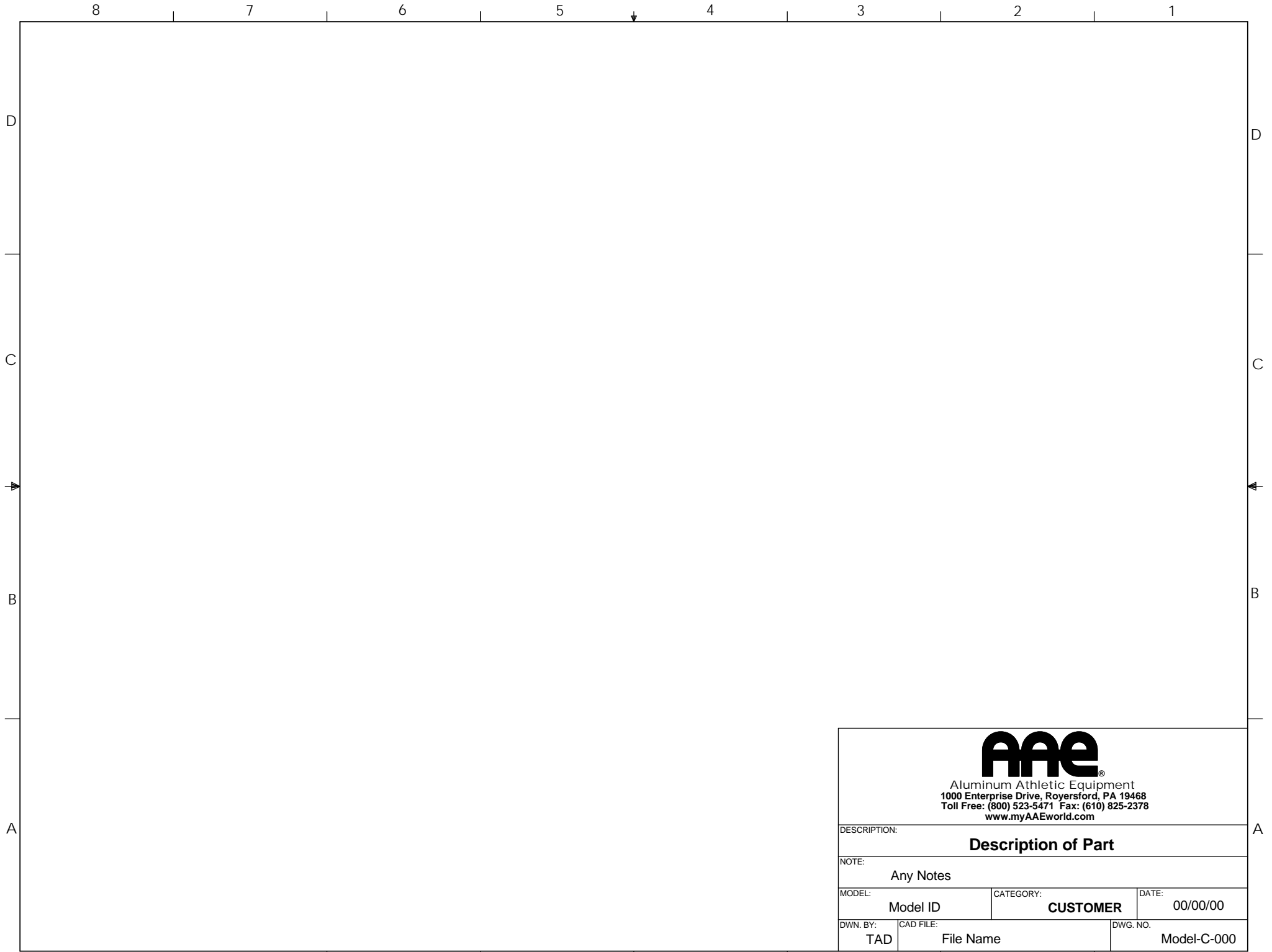
Aluminum Athletic Equipment  
1000 Enterprise Drive, Royersford, PA 19468  
Toll Free: (800) 523-5471 Phone: (610) 825-6565  
www.aaesports.com

DESCRIPTION:

### ROW-5 - Removable Outfield Wall - Specifications

NOTE:

Project:		
MODEL: ROW-5	CATEGORY: CUSTOMER	DATE: 10/31/06
DWN. BY: TAD	CAD FILE: ROW-5 - Specifications	DWG. NO. ROW-5-C-001

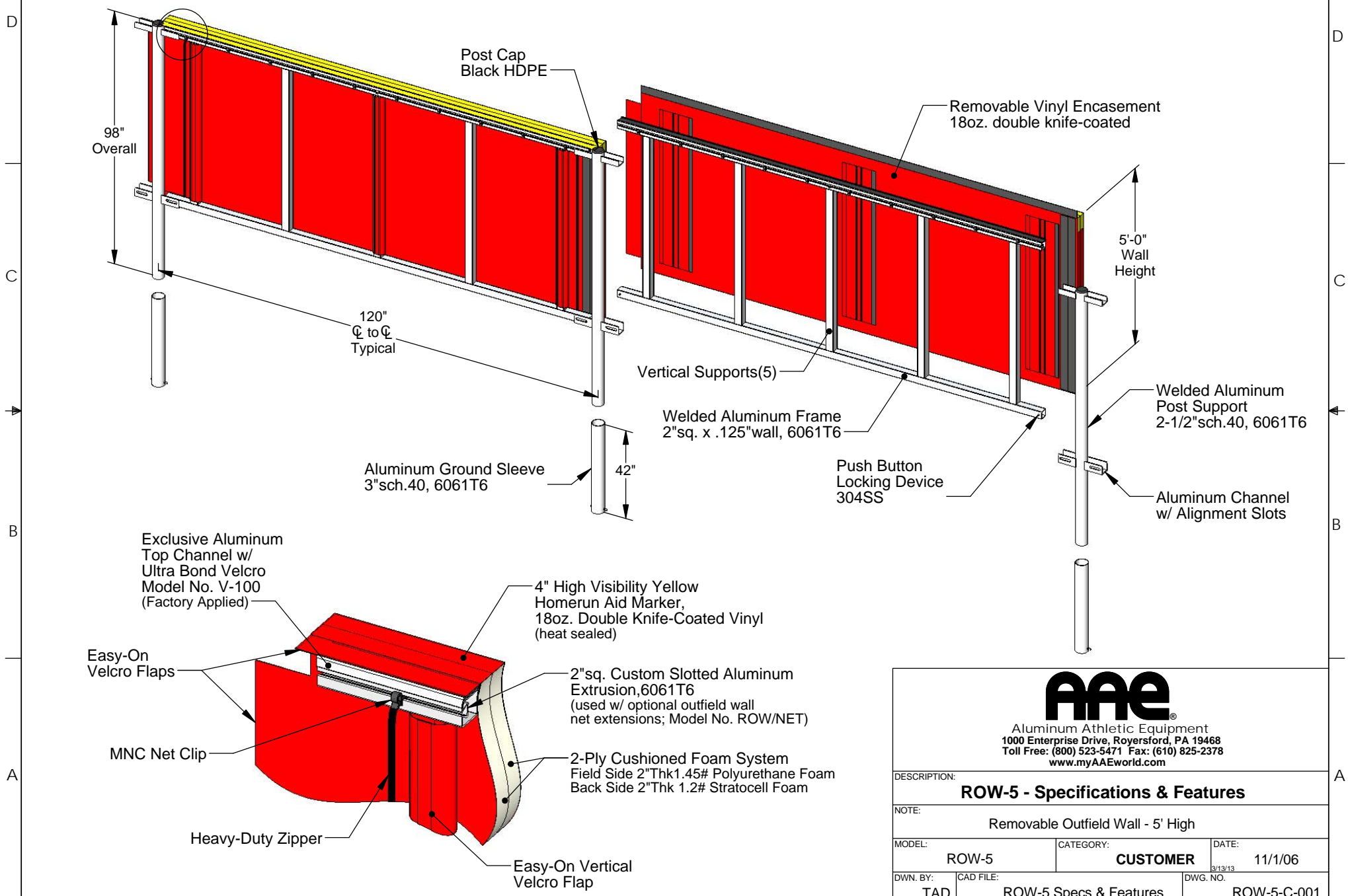


Aluminum Athletic Equipment  
 1000 Enterprise Drive, Royersford, PA 19468  
 Toll Free: (800) 523-5471 Fax: (610) 825-2378  
[www.myAAEworld.com](http://www.myAAEworld.com)

DESCRIPTION:			<b>Description of Part</b>
NOTE:			Any Notes
MODEL:	CATEGORY:	DATE:	
Model ID	<b>CUSTOMER</b>	00/00/00	
DWN. BY:	CAD FILE:	DWG. NO.	
TAD	File Name	Model-C-000	

# ROW-5 - Removable Outfield Wall

## Specifications & Features





**Aluminum Athletic Equipment**  
 1000 Enterprise Drive, Royersford, PA 19468  
 Toll Free: (800) 523-5471 Fax: (610) 825-2378  
[www.myAAEworld.com](http://www.myAAEworld.com)

DESCRIPTION:		
<b>ROW-5 - Specifications &amp; Features</b>		
NOTE:		
Removable Outfield Wall - 5' High		
MODEL:	CATEGORY:	DATE:
ROW-5	<b>CUSTOMER</b>	11/1/06
DWN. BY:	CAD FILE:	DWG. NO.:
TAD	ROW-5 Specs & Features	ROW-5-C-001