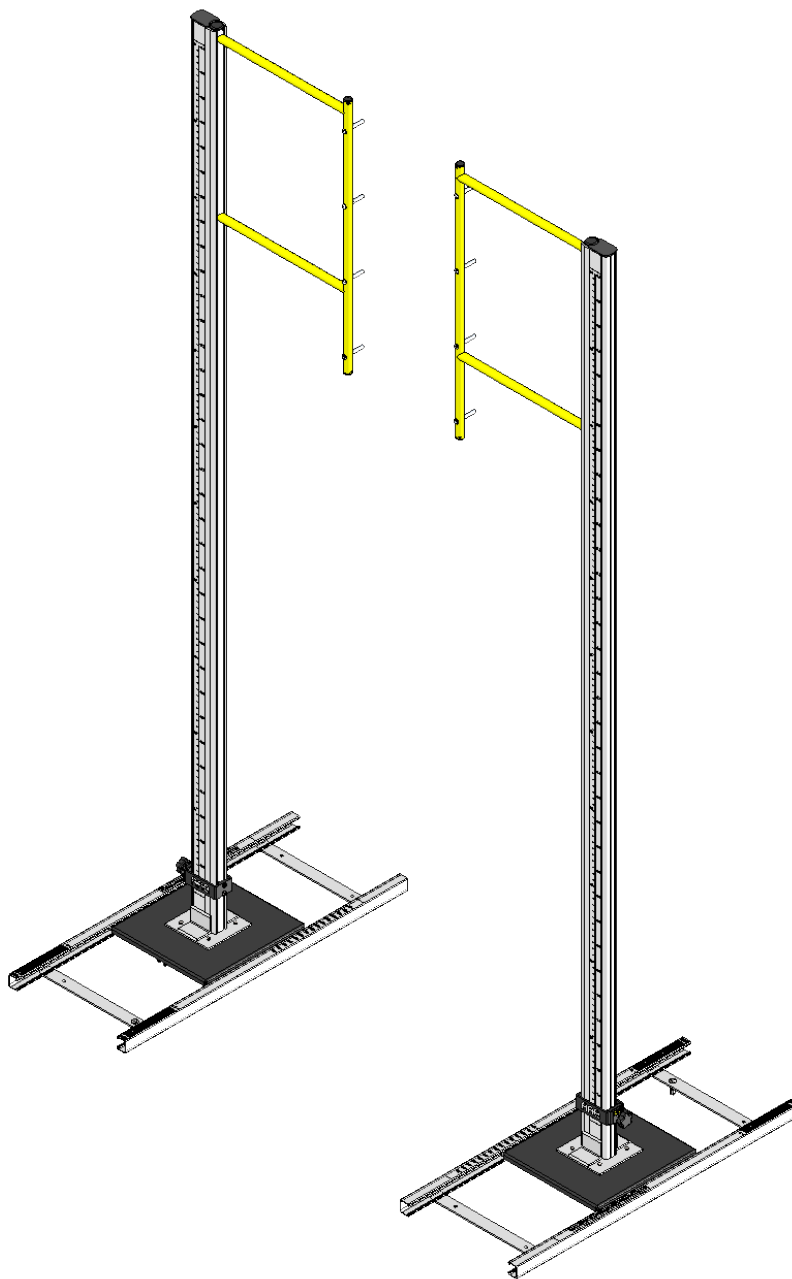


PVS-IAAF

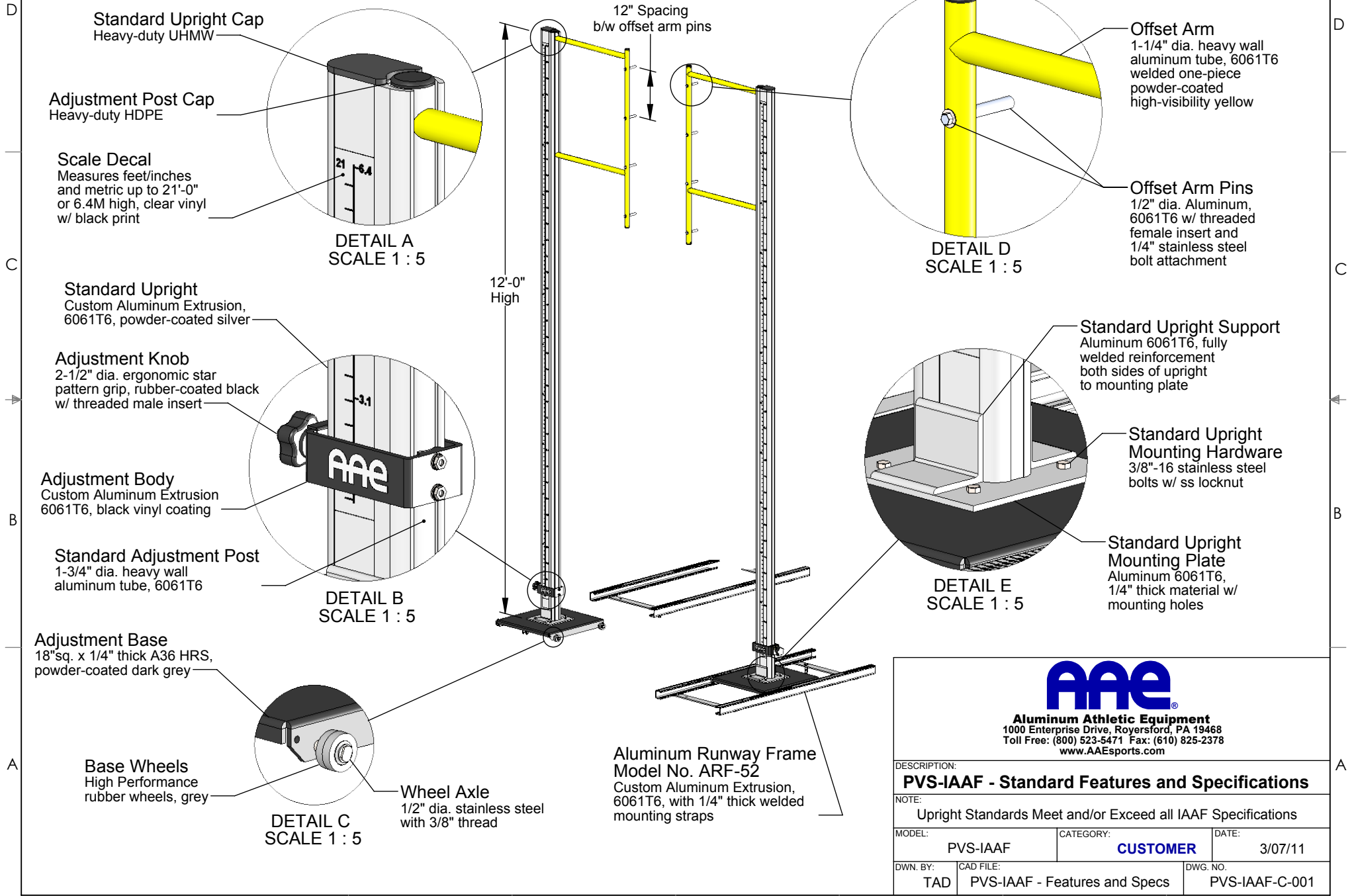
International Pole Vault Standards



Aluminum Athletic Equipment
1000 Enterprise Drive, Royersford, PA 19468
Toll Free: (800) 523-5471 Fax: (610) 825-2378
www.AAEsports.com

PVS-IAAF - Premier Pole Vault Standards (International)

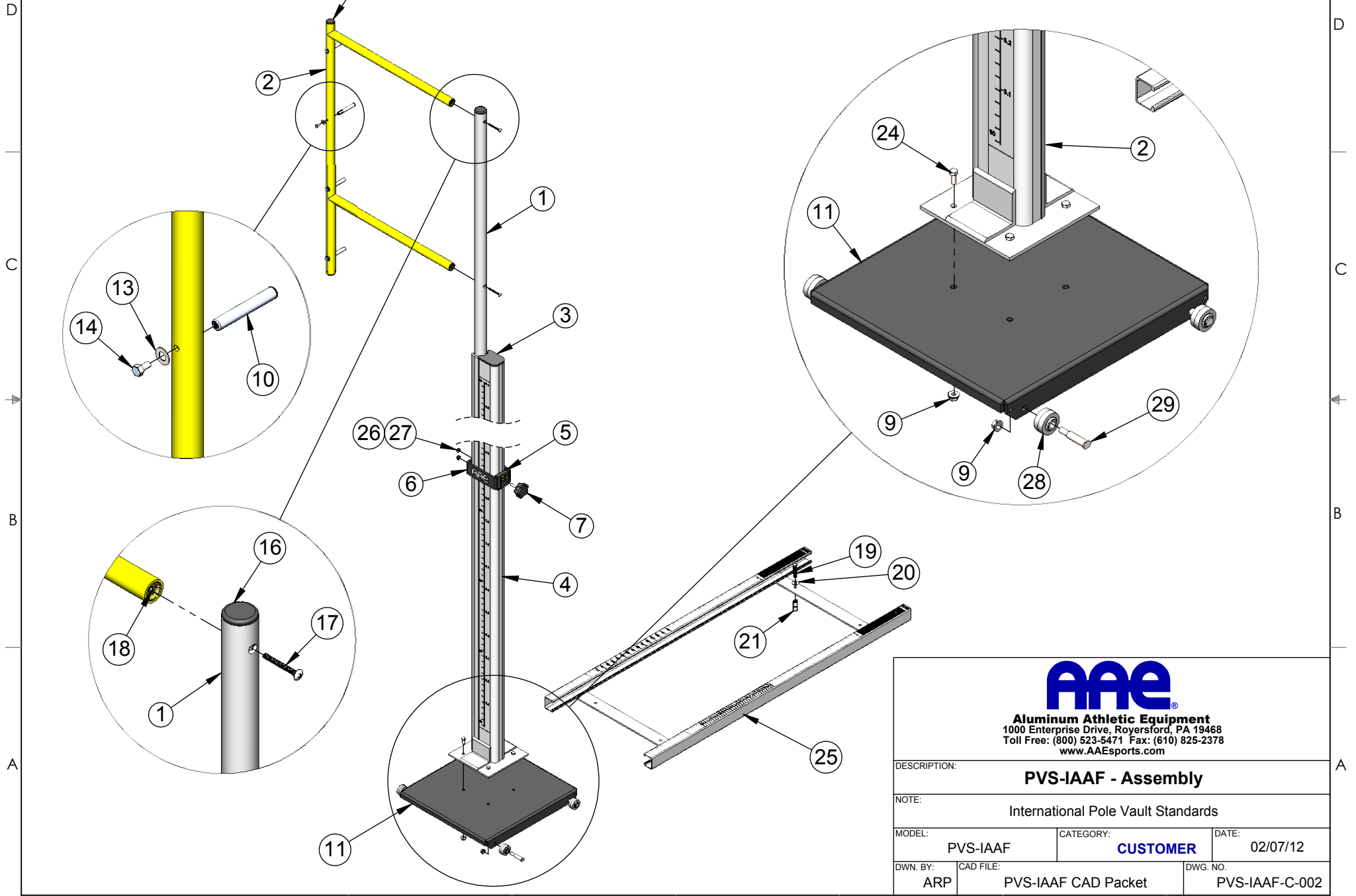
Standard Features and Specifications



Aluminum Athletic Equipment
1000 Enterprise Drive, Royersford, PA 19468
Toll Free: (800) 523-5471 Fax: (610) 825-2378
www.AAEsports.com

DESCRIPTION: PVS-IAAF - Standard Features and Specifications		
NOTE: Upright Standards Meet and/or Exceed all IAAF Specifications		
MODEL: PVS-IAAF	CATEGORY: CUSTOMER	DATE: 3/07/11
DWN. BY: TAD	CAD FILE: PVS-IAAF - Features and Specs	DWG. NO. PVS-IAAF-C-001

PVS-IAAF - Pole Vault Standards (International) Assembly

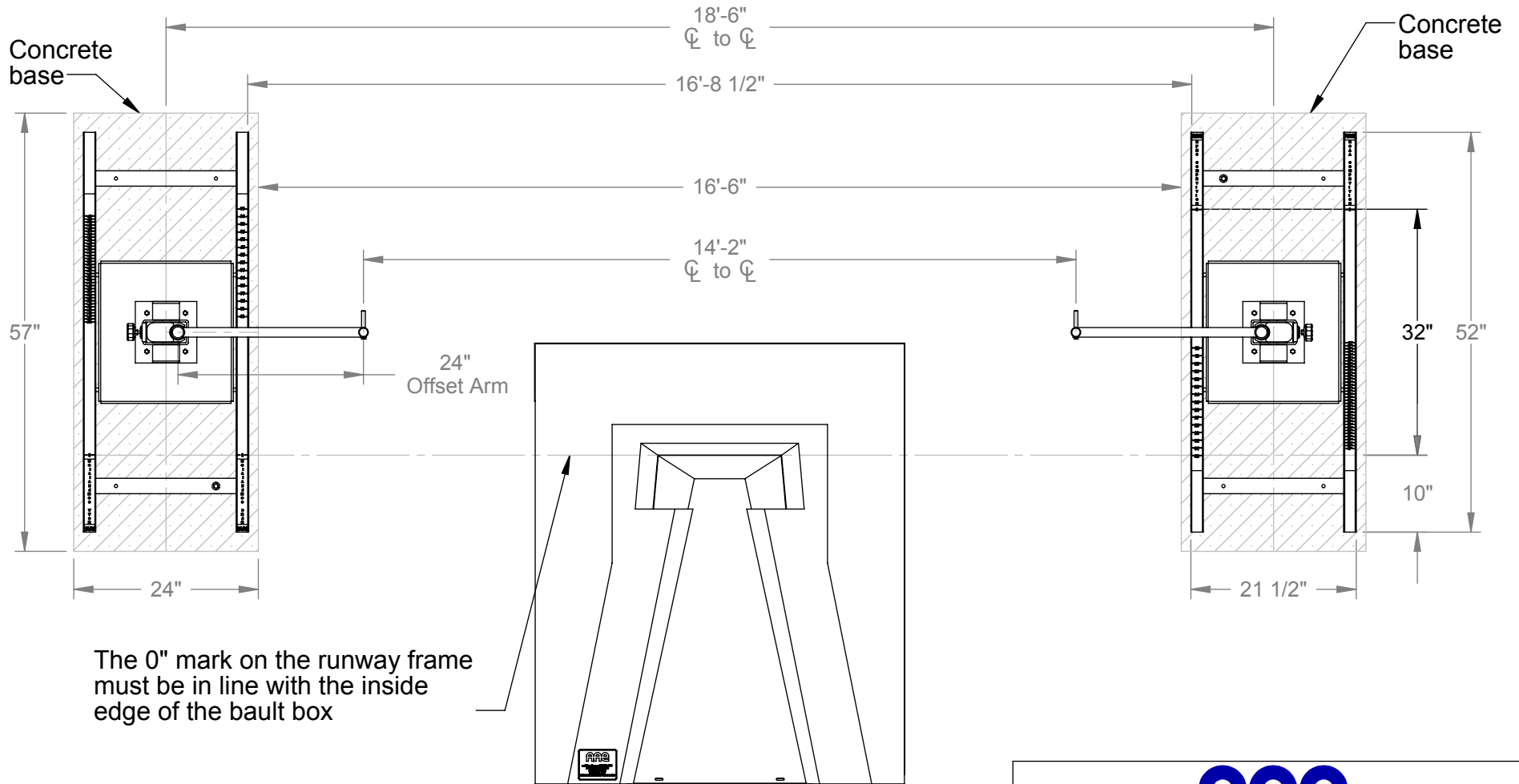


Aluminum Athletic Equipment
 1000 Enterprise Drive, Royersford, PA 19468
 Toll Free: (800) 523-5471 Fax: (610) 825-2378
www.AAEsports.com

DESCRIPTION:			PVS-IAAF - Assembly		
NOTE:			International Pole Vault Standards		
MODEL:	PVS-IAAF	CATEGORY:	CUSTOMER	DATE:	02/07/12
DWN. BY:	ARP	CAD FILE:	PVS-IAAF CAD Packet	DWG. NO.:	PVS-IAAF-C-002

PVS-IAAF - Premier Pole Vault Standards (International)

Plan View Layout



The 0" mark on the runway frame must be in line with the inside edge of the vault box

Vault Box
(Sold Separately)

Notes:

- Dimensions listed are for 21'-6" wide AAE pits only. Consult AAE for different width pits.
- Runway frame must be anchored to concrete base



Aluminum Athletic Equipment
1000 Enterprise Drive, Royersford, PA 19468
Toll Free: (800) 523-5471 Fax: (610) 825-2378
www.AAEsports.com

DESCRIPTION:		
PVS-IAAF - Plan View Layout		
NOTE: International Premier Pole Vault Standards		
MODEL:	CATEGORY:	DATE:
PVS-IAAF	CUSTOMER	02/07/12
DWN. BY:	CAD FILE:	DWG. NO.:
ARP	PVS-IAAF CAD Packet	PVS-IAAF-C-003

**PVS-IAAF
IAAF POLE VAULT STANDARD
INSTALLATION AND OPERATION INSTRUCTIONS**

Please note: These instructions are for 16'-6" wide pits only. Please consult AAE, or make the necessary adjustments for different width pits.

INSTALLATION:

(Concrete Pads for Runway Frames)

1. Locate proper location of concrete pads to be poured that will anchor the PVS-IAAF runway frames.
2. Dig two holes approximately 24" x 72" x 6" deep and 16'6" apart. **(Consult local building codes for concrete depth and drainage requirements.)** See PVS-IAAF Plan View drawing (AAE-146) for details.
3. Make (2) wooden concrete forms 24" x 72" **(inside dimensions)** around the openings. Make the forms level and flush with the ground. Pour the concrete into the forms, making sure the concrete is level with the ground.
4. After the concrete has hardened, locate runway frames in their proper location. Runway frames should have the "0" mark in line with the top inside edge of the vault box, **(inside edge closest to the rear of the landing pit)** be 16'8" apart, and parallel. (See PVS-IAAF Plan View drawing for details.) Once proper location has been established, mark hole locations for fixing runway frames to the pads.
5. Remove frames. Using a 3/4" **Masonry Drill Bit**, drill a hole 2" deep. Using a hammer, tap 3/8"-16 x 2" Double Expansion Shield (Item No. 21) in with **threaded side down**, flush with concrete surface.

ASSEMBLY:

1. Bolt runway frames to concrete pads using 3/8"-16 x 2" hex bolts (Item no. 19) and 3/8" flat washers (Item no. 20). **Note: Each runway frame must be bolted into the concrete in all 6 bolting locations.** Re-check all bolts for tightness.
2. Assemble four (4) glides (Item no. 23) to base (Item no. 11) using 3/8"-16 x 1-1/2" hex bolts, 3/8" flat washers, and 3/8"-16 serrated hex nuts (Item Nos. 20, 22, & 9). **Refer to Isometric Assembly (Drawing No. AAE-144) for proper orientation of glides.** It is important that the glides be put on the base the right way, or the unit will not operate correctly! Repeat procedures for other base.
3. Attach offset arm (Item no. 2), to Inner tube (Item no. 1) using 1/4"-20 x 1-1/2" socket cap screws (Item no. 17). Repeat procedures for other upright.
4. Attach crossbar pins (Item no. 10) to offset arms (Item no. 2) using 1/4"-20 x 1/2" hex bolts (Item no. 14). There are 2 crossbar pins for each offset arm.

PVS-IAAF
IAAF POLE VAULT STANDARD
INSTALLATION AND OPERATION INSTRUCTIONS

5. Attach completed main upright assembly to base (Item no. 11) using 3/8"-16 x 1" hex bolts and 3/8"-16 serrated hex nuts (Item No. 24 & 9). Repeat procedure for other upright & base.
6. Slide completed units into their respective frames. Offset arms should face **towards** the center of the pit with the adjustment knob on the outside of the pit.

OPERATION:

1. The PVS-IAAF Pole Vault Standard is designed to measure jumps from 9'0" - 21'0". The lowest reading on the adjustment scale is 10'0". The 10'0" reading is used with the crossbar located on the top crossbar support pin. To obtain a 9'0" measurement, move the crossbar down to the lowest crossbar pin position. Likewise, a 21' reading would be taken when the reading on the scale was 21'0" and the crossbar was on the top crossbar pin.
2. Pole Vault standard may be adjusted manually by loosening adjusting knob (Item no. 7) and raising or lowering the upright to the desired height. Pole Vault standard may also be adjusted in a 1'-0" increments by moving crossbar from pin to pin. (Crossbar pins are 12" apart.)

CARE AND SPECIAL INSTRUCTIONS:

1. Silicone spray may be used on the nylon glides to facilitate free movement of the upright assembly in the runway frame.
2. At the end of the season, as well as after each event (dependent upon the risk of vandalism or injury), the upright assemblies should be removed and the runway frames unbolted and removed for storage. Frequent storage and proper care of the PVS-IAAF will greatly improve the life and functionality of the unit.
3. While the PVS-IAAF is in use, the runway frame **must be bolted** into the concrete for safety of the participants as well as for proper operation.
4. Properly installed, the PVS-IAAF can be adjusted laterally from 0" – 32" (with 0" being the inside edge of the vault box) away from the vaulter, and 0"-16" towards the vaulter.

FOR TECHNICAL ASSISTANCE, CALL 1-800-523-5471

**PVS-IAAF
IAAF PREMIER POLE VAULT STANDARD
PARTS LIST**

Pt.#	Item	Description	Qty.
1	Inner Tube	1-3/4" dia. x .100 wall x 144" lg. 6061T6 aluminum tube	2
2	Offset Arm	1-1/4" x .125 wall x 22-1/2" X 24" 6061T6 Aluminum stay, "U" shape	2
3	End Cap	2-1/2" x 3" x 1/4" cast aluminum end cap	2
4	Outer Tube	2" x 5" x .150" custom aluminum extrusion, 6063T6, 12'-0" lg.	2
5	H-pad	Aluminum "H" adjustment pad, cast	2
6	Slider	Aluminum rectangular adjustment body, cast	2
7	Knob	1-7/8" dia. x 3/8"-16 x 1" adjustment knob, 922 series, ribbed	2
9	Nut	3/8"-16 "wiz" lock nut, SS	16
10	Crossbar Pin	1/2" dia.x 4-1/2" lg. aluminum rod, 1/4"-20 tapped end	4
11	Base	Steel base	2
14	Bolt	1/4"-20 x 1/2" hex bolt, SS	4
15	Loop	Velcro Loop, adhesive back, 1" x 5"	4
16	Cap	Plastic cap, Caplug #17-S	2
17	Bolt	1/4"-20 x 1-1/2" socket cap screw, SS	4
18	Connector	1-1/4" metal tube connector, 1/4"-20, 16-18 gage	4
19	Bolt	3/8"-16 x 2" steel hex bolt, SS	12
20	Washer	3/8" flat washer, SS	20
21	Concrete Anchor	3/8"-16 x 2" Double expansion shield	12
22	Bolt	3/8"-16 x 1-1/2" steel hex bolt, SS	8
23	Glide	UHMW Glide, 1" lg. x 3/4" x 1-9/16"	8
24	Bolt	3/8"-16 x 1" hex bolt, SS	8
25	Runway Frame	Welded aluminum runway frame, 22-1/2" wide x 68" lg., w/ decal	2
26	Bolt	5/16"-18 x 3/4" hex bolt, SS	4
27	Nut	5/16"-18 wiz-lock nut, SS	4

FOR TECHNICAL ASSISTANCE, CALL 1-800-523-5471

K:\AAE Data\Product Instructions & Parts Lists\Track & Field\PVS-IAAF\PVS-IAAF Parts List.doc
Copyright © 2001 Aluminum Athletic Equipment Co.