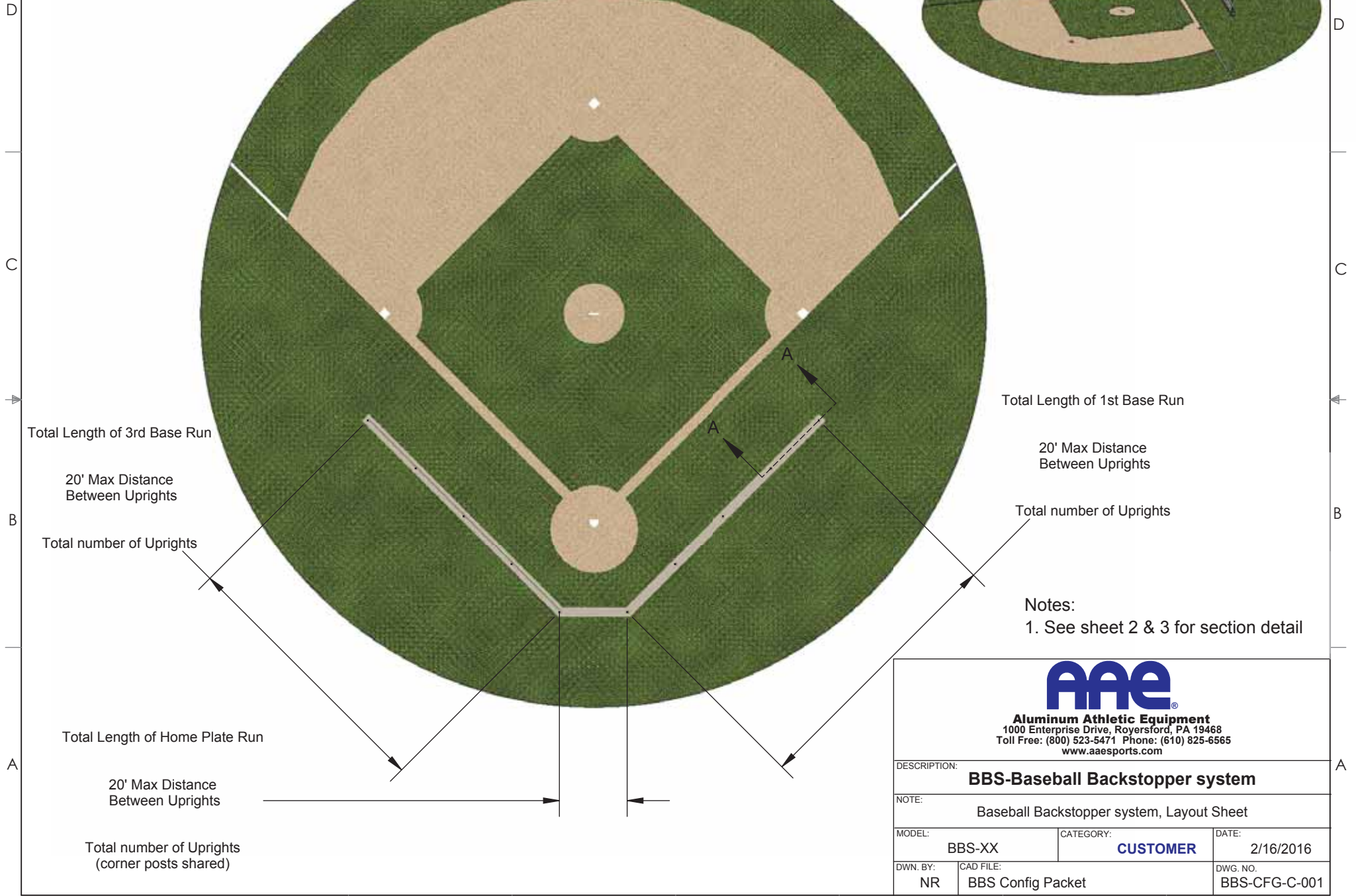


BBS - Layout Guideline Sheet



Total Length of 1st Base Run

20' Max Distance
Between Uprights

Total number of Uprights

Total Length of 3rd Base Run

20' Max Distance
Between Uprights

Total number of Uprights

Total Length of Home Plate Run

20' Max Distance
Between Uprights

Total number of Uprights
(corner posts shared)

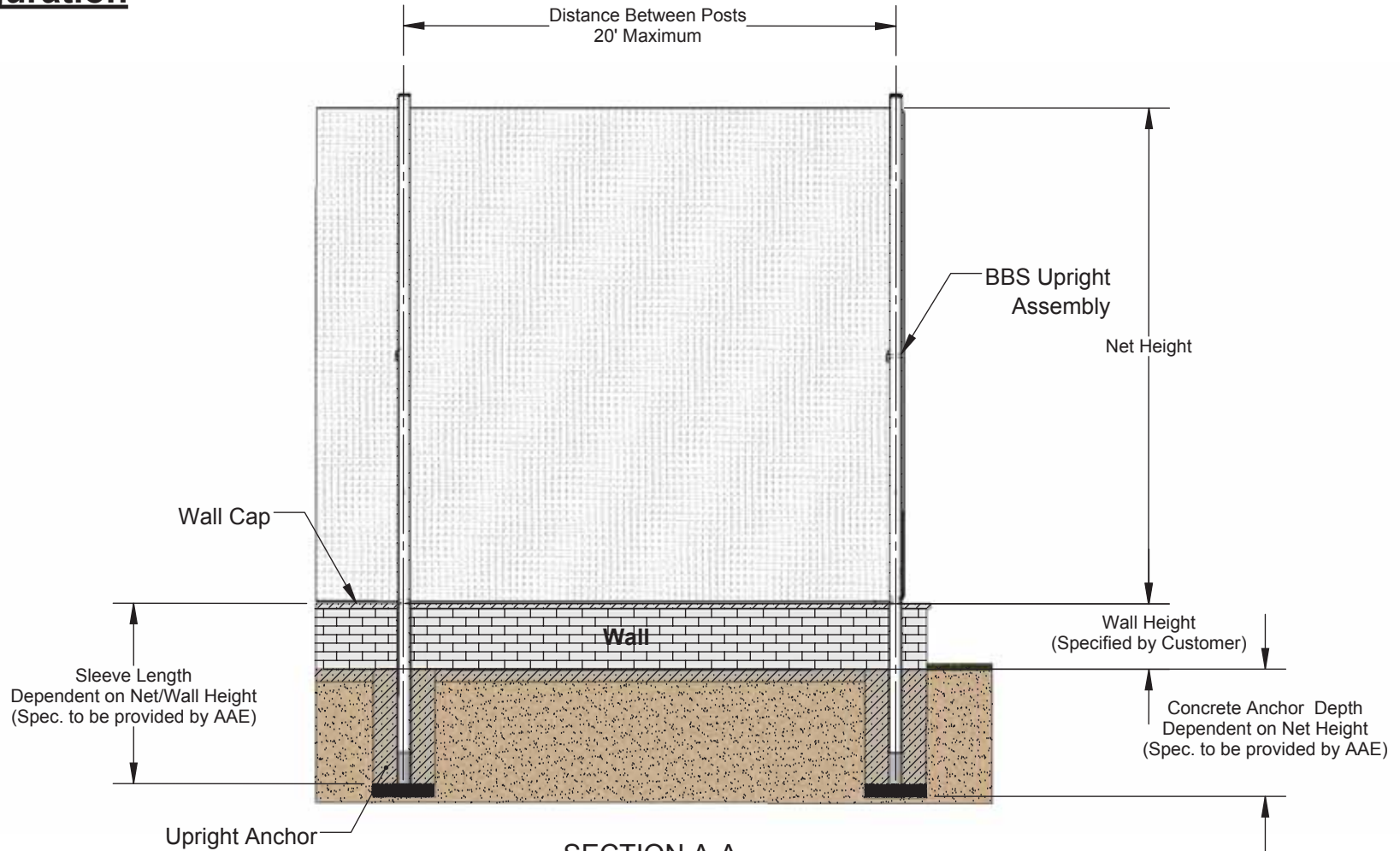
Notes:
1. See sheet 2 & 3 for section detail



Aluminum Athletic Equipment
1000 Enterprise Drive, Royersford, PA 19468
Toll Free: (800) 523-5471 Phone: (610) 825-6565
www.aaesports.com

DESCRIPTION:		
BBS-Baseball Backstopper system		
NOTE: Baseball Backstopper system, Layout Sheet		
MODEL:	CATEGORY:	DATE:
BBS-XX	CUSTOMER	2/16/2016
DWN. BY:	CAD FILE:	DWG. NO.:
NR	BBS Config Packet	BBS-CFG-C-001

BBS - In Wall Configuration



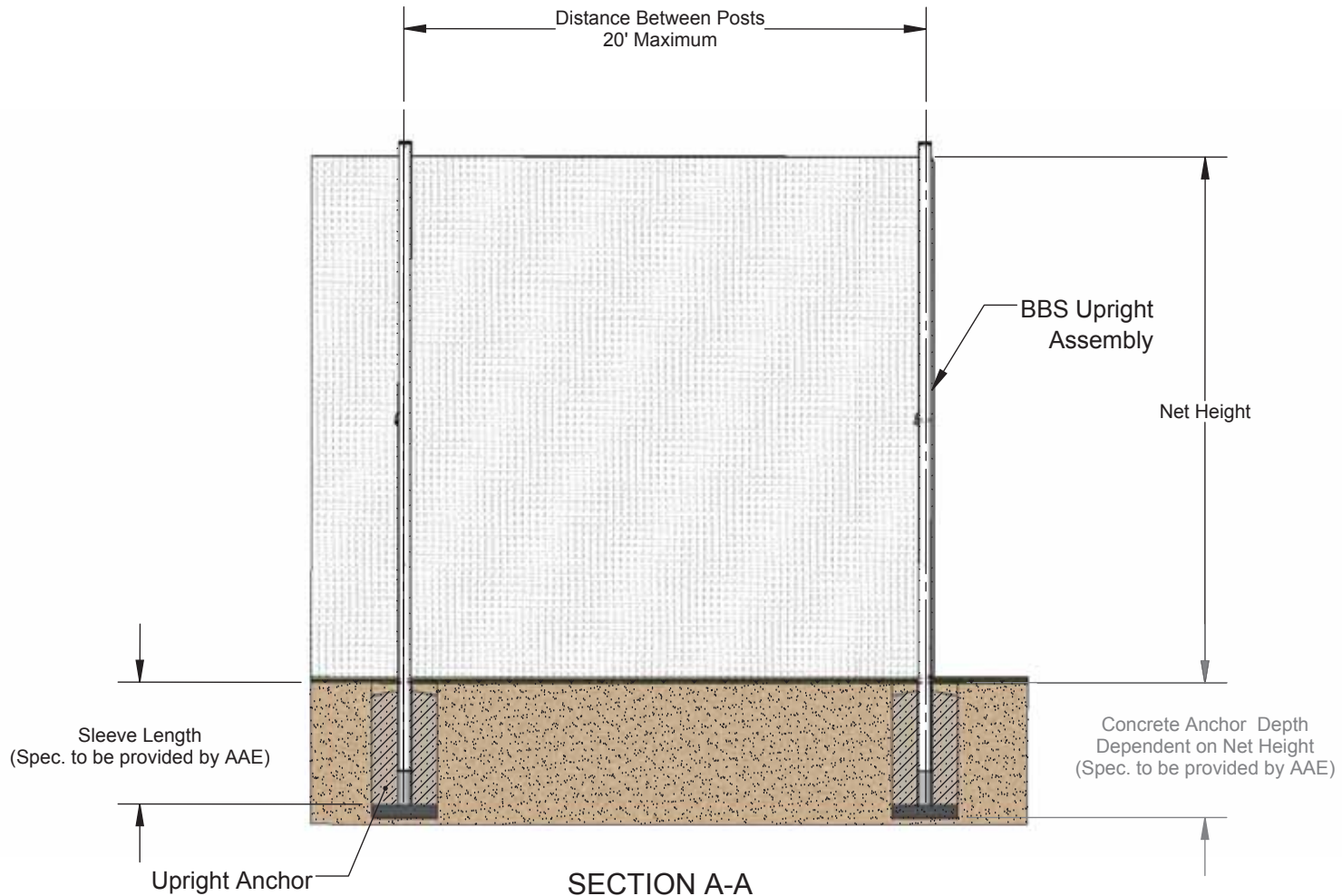
SECTION A-A
NOT TO SCALE



Aluminum Athletic Equipment
1000 Enterprise Drive, Royersford, PA 19468
Toll Free: (800) 523-5471 Phone: (610) 825-6565
www.aaesports.com

DESCRIPTION:		
BBS - Baseball Backstopper system		
NOTE: Baseball Backstopper system, In wall configuration		
MODEL:	CATEGORY:	DATE:
BBS-XX	CUSTOMER	2/16/2016
DWN. BY:	CAD FILE:	DWG. NO.:
NR	BBS Config Packet	BBS-CFG-C-002

BBS - In Ground Configuration



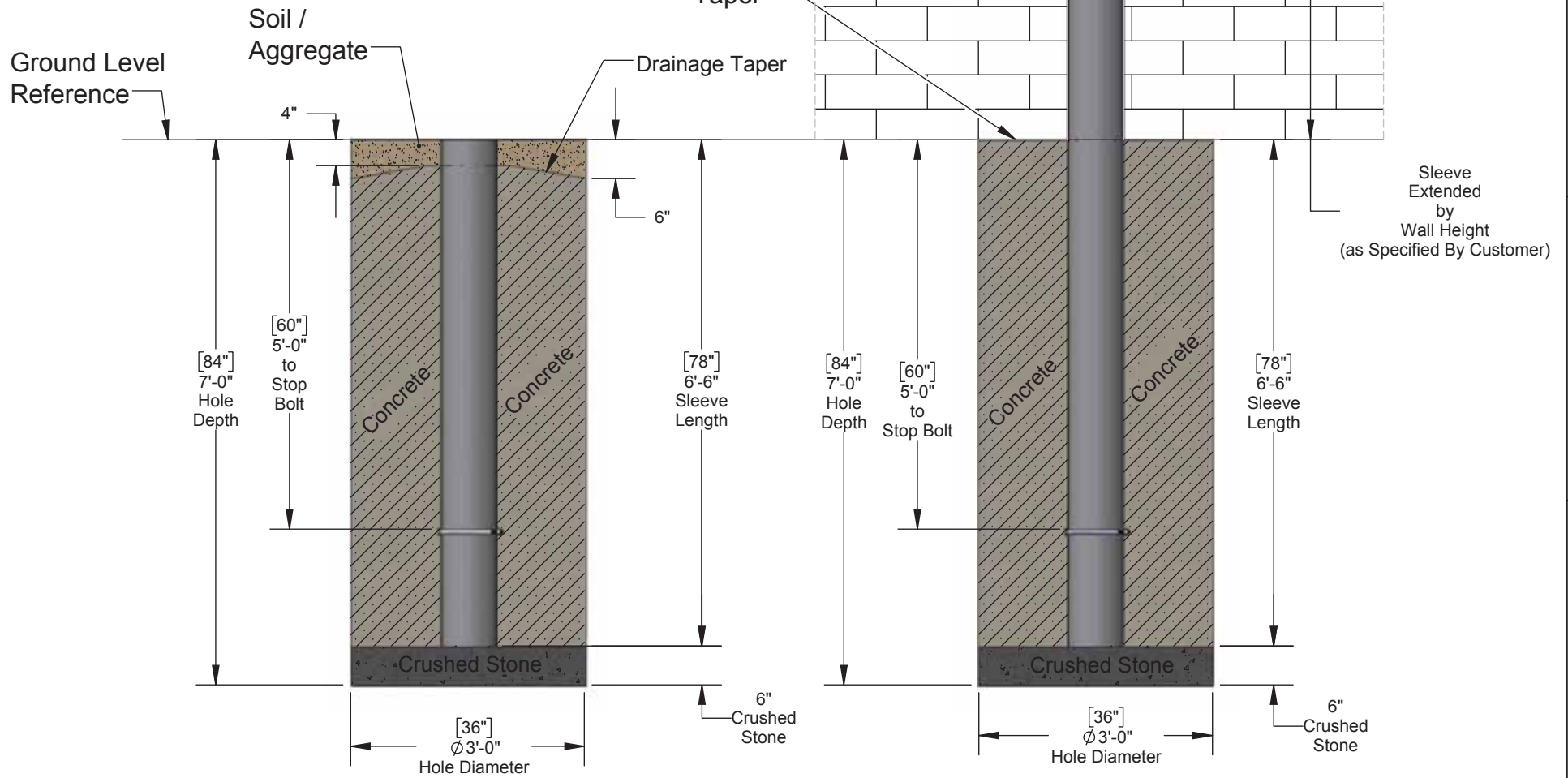
SECTION A-A
NOT TO SCALE



Aluminum Athletic Equipment
 1000 Enterprise Drive, Royersford, PA 19468
 Toll Free: (800) 523-5471 Phone: (610) 825-6565
www.aaesports.com

DESCRIPTION:		
BBS - Baseball Backstopper system		
NOTE: Baseball Backstopper system, In Ground Configuration		
MODEL:	CATEGORY:	DATE:
BBS-XX	CUSTOMER	2/16/2016
DWN. BY:	CAD FILE:	DWG. NO.:
NR	BBS Config Packet	BBS-CFG-C-003

BBS-40 Ground Sleeve Specifications



Standard Ground Sleeve & Footing

Custom Ground Sleeve & Footing

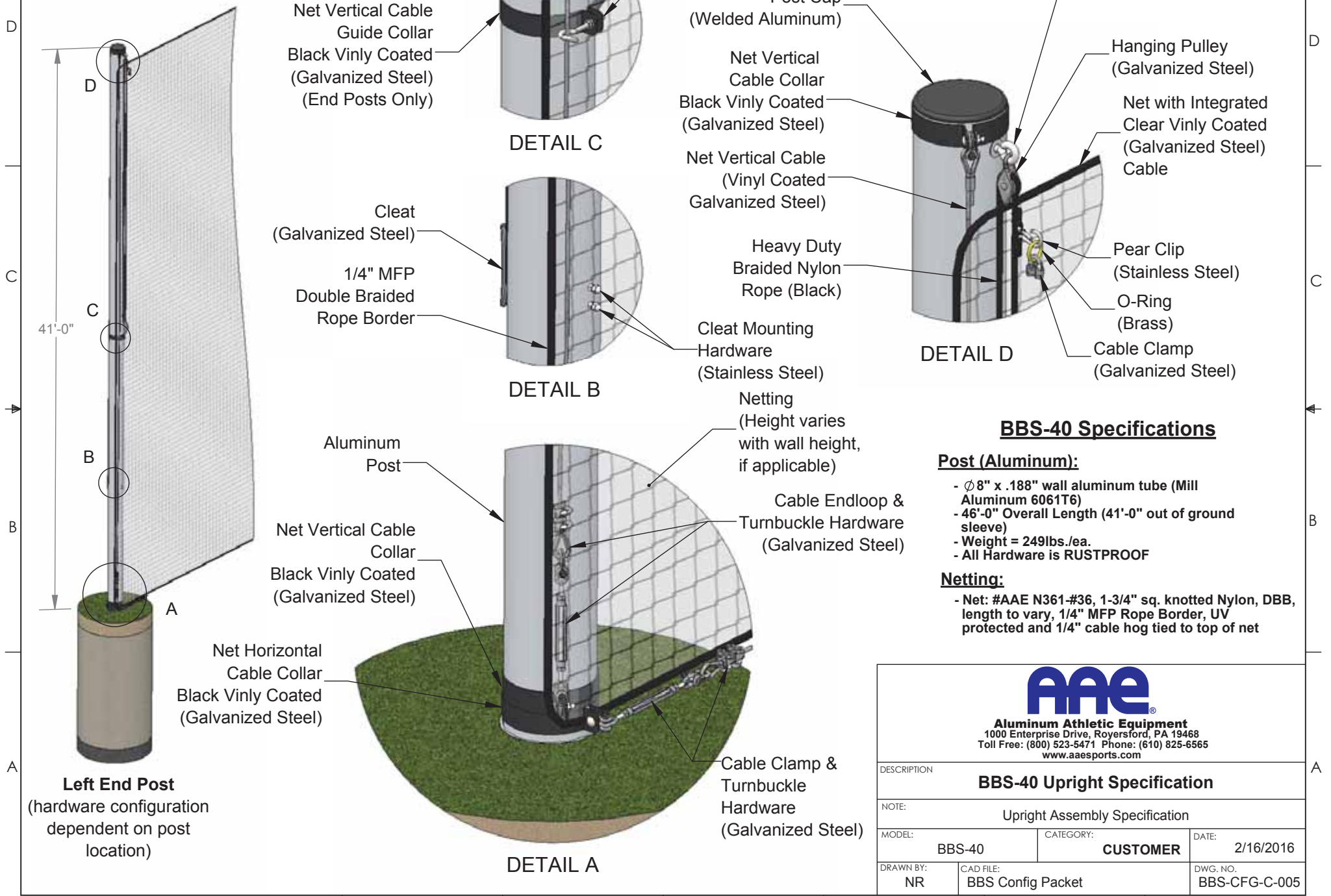
Note: **Consult Local Codes



Aluminum Athletic Equipment
1000 Enterprise Drive, Royersford, PA 19468
Toll Free: (800) 523-5471 Phone: (610) 825-6565
www.aaesports.com

DESCRIPTION		
BBS-40 Ground Sleeve Specification		
NOTE: Ground Sleeve/Concrete Anchor Installation Specification		
MODEL:	CATEGORY:	DATE:
BBS-40	CUSTOMER	2/16/2016
DRAWN BY:	CAD FILE:	DWG. NO.:
NR	BBS Config Packet	BBS-CFG-C-004

BBS-40 Upright Specifications



Net Vertical Cable Guide Collar
Black Vinly Coated (Galvanized Steel)
(End Posts Only)

DETAIL C

Cleat (Galvanized Steel)
1/4" MFP Double Braided Rope Border

DETAIL B

Aluminum Post
Net Vertical Cable Collar Black Vinly Coated (Galvanized Steel)

DETAIL A

Eyebolt & Retention Hardware (Stainless Steel)
Post Cap (Welded Aluminum)
Net Vertical Cable Collar Black Vinly Coated (Galvanized Steel)
Net Vertical Cable (Vinyl Coated Galvanized Steel)

DETAIL D

Eyebolt (Stainless Steel)
Hanging Pulley (Galvanized Steel)
Net with Integrated Clear Vinly Coated (Galvanized Steel) Cable
Heavy Duty Braided Nylon Rope (Black)
Pear Clip (Stainless Steel)
O-Ring (Brass)
Cable Clamp (Galvanized Steel)

Netting (Height varies with wall height, if applicable)
Cable Endloop & Turnbuckle Hardware (Galvanized Steel)

Cable Clamp & Turnbuckle Hardware (Galvanized Steel)

BBS-40 Specifications

Post (Aluminum):

- $\varnothing 8''$ x .188" wall aluminum tube (Mill Aluminum 6061T6)
- 46'-0" Overall Length (41'-0" out of ground sleeve)
- Weight = 249lbs./ea.
- All Hardware is RUSTPROOF

Netting:

- Net: #AAE N361-#36, 1-3/4" sq. knotted Nylon, DBB, length to vary, 1/4" MFP Rope Border, UV protected and 1/4" cable hog tied to top of net



Aluminum Athletic Equipment
1000 Enterprise Drive, Royersford, PA 19468
Toll Free: (800) 523-5471 Phone: (610) 825-6565
www.aaesports.com

DESCRIPTION			
BBS-40 Upright Specification			
NOTE: Upright Assembly Specification			
MODEL:	BBS-40	CATEGORY:	CUSTOMER
			DATE: 2/16/2016
DRAWN BY:	NR	CAD FILE:	BBS Config Packet
			DWG. NO. BBS-CFG-C-005