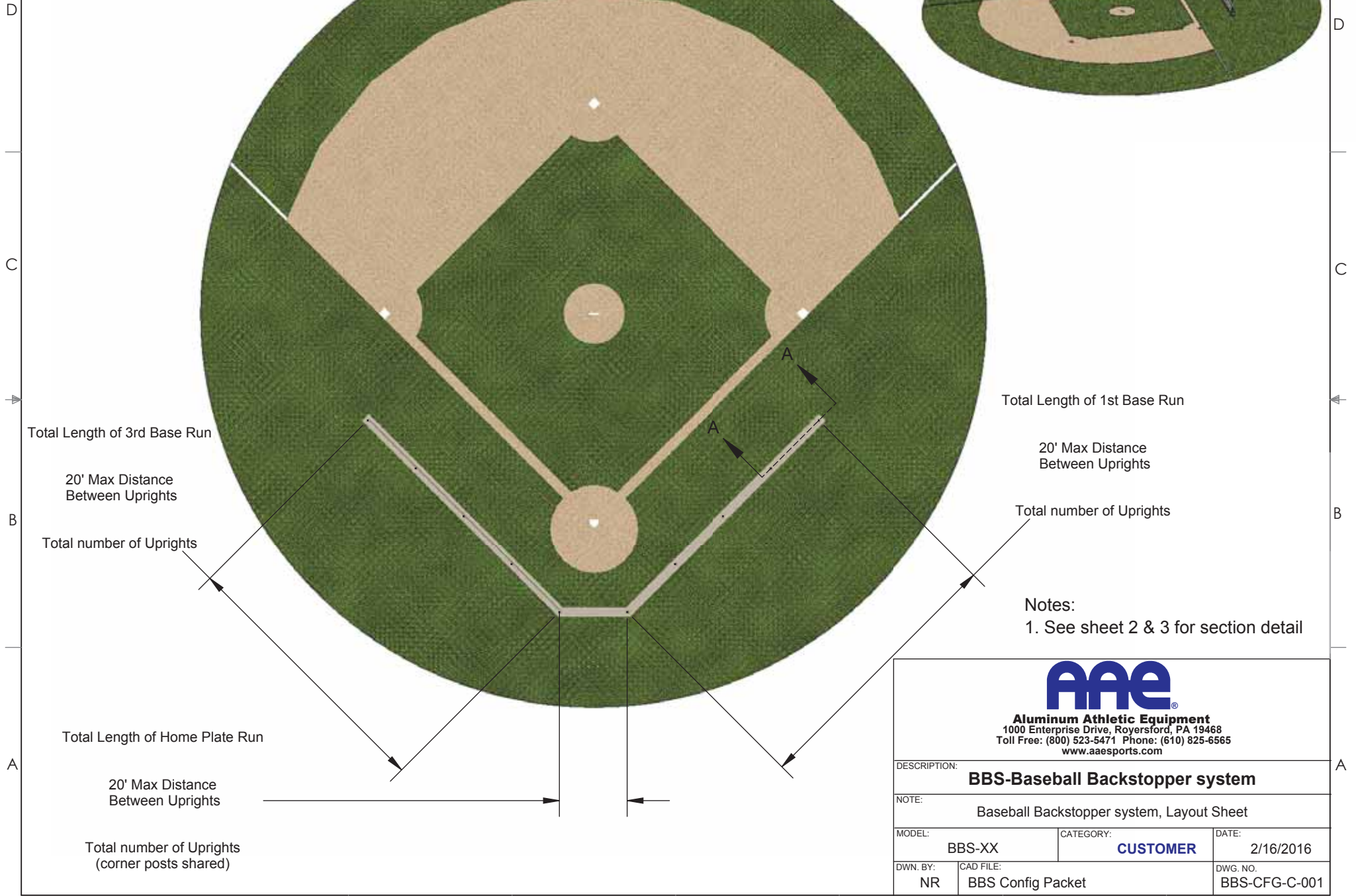


# BBS - Layout Guideline Sheet



Total Length of 1st Base Run

20' Max Distance  
Between Uprights

Total number of Uprights

Notes:  
1. See sheet 2 & 3 for section detail



**Aluminum Athletic Equipment**  
1000 Enterprise Drive, Royersford, PA 19468  
Toll Free: (800) 523-5471 Phone: (610) 825-6565  
www.aaesports.com

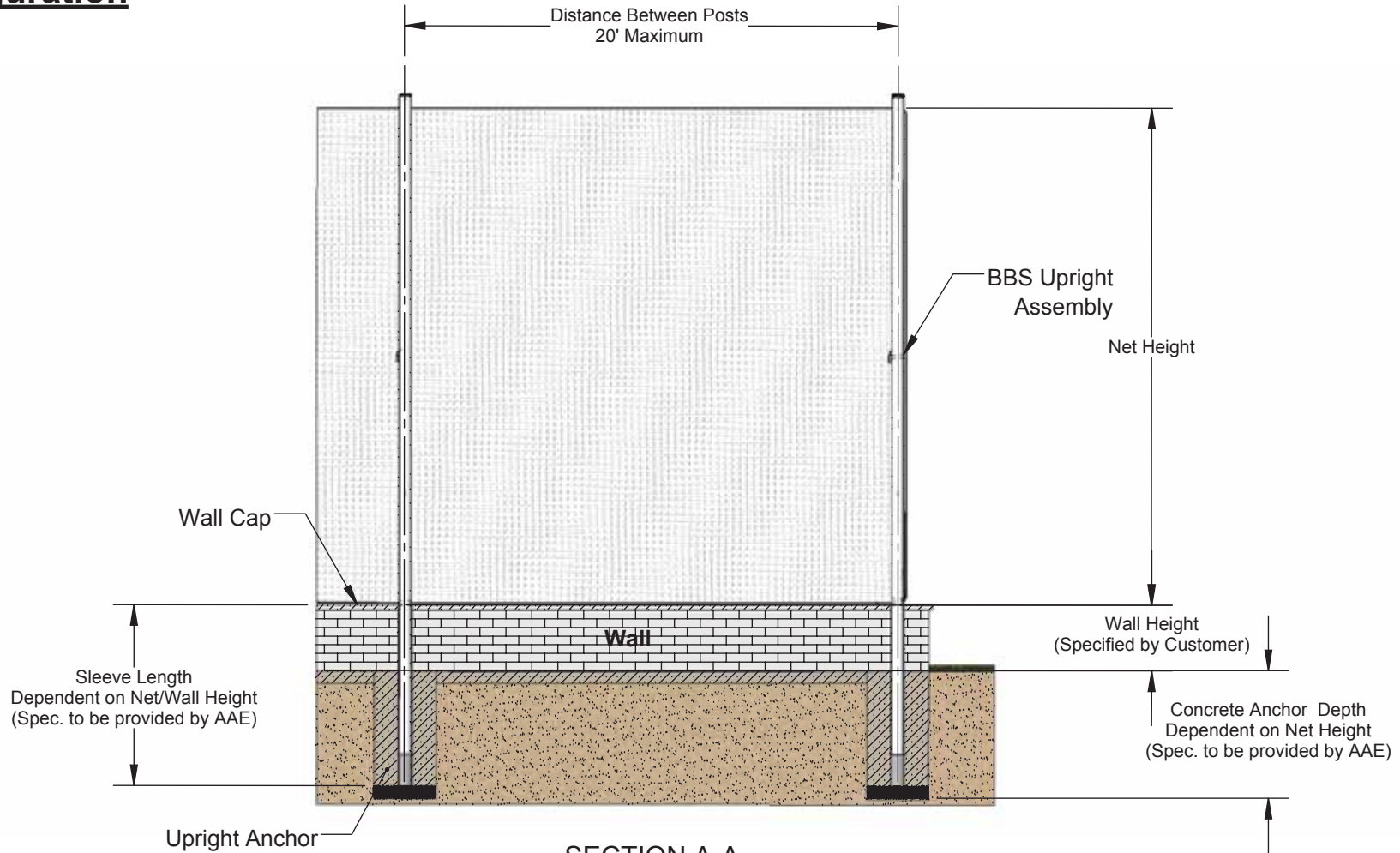
DESCRIPTION: **BBS-Baseball Backstopper system**

NOTE: Baseball Backstopper system, Layout Sheet

MODEL:	BBS-XX	CATEGORY:	<b>CUSTOMER</b>	DATE:	2/16/2016
--------	--------	-----------	-----------------	-------	-----------

DWN. BY:	NR	CAD FILE:	BBS Config Packet	DWG. NO.:	BBS-CFG-C-001
----------	----	-----------	-------------------	-----------	---------------

# BBS - In Wall Configuration



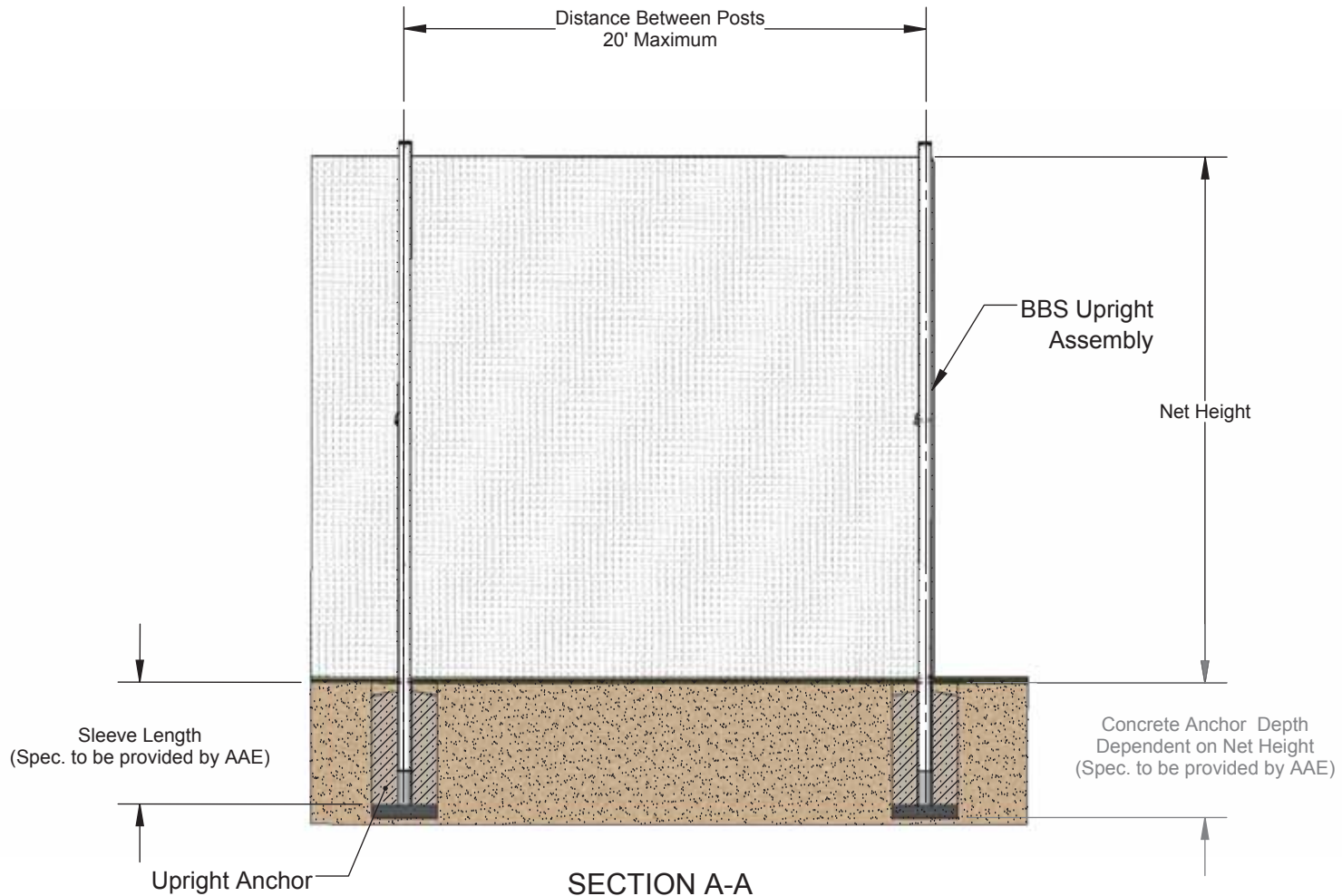
SECTION A-A  
NOT TO SCALE



**Aluminum Athletic Equipment**  
1000 Enterprise Drive, Royersford, PA 19468  
Toll Free: (800) 523-5471 Phone: (610) 825-6565  
www.aaesports.com

DESCRIPTION:		
<b>BBS - Baseball Backstopper system</b>		
NOTE: Baseball Backstopper system, In wall configuration		
MODEL:	CATEGORY:	DATE:
BBS-XX	<b>CUSTOMER</b>	2/16/2016
DWN. BY:	CAD FILE:	DWG. NO.:
NR	BBS Config Packet	BBS-CFG-C-002

# BBS - In Ground Configuration



SECTION A-A  
NOT TO SCALE



**Aluminum Athletic Equipment**  
1000 Enterprise Drive, Royersford, PA 19468  
Toll Free: (800) 523-5471 Phone: (610) 825-6565  
www.aaesports.com

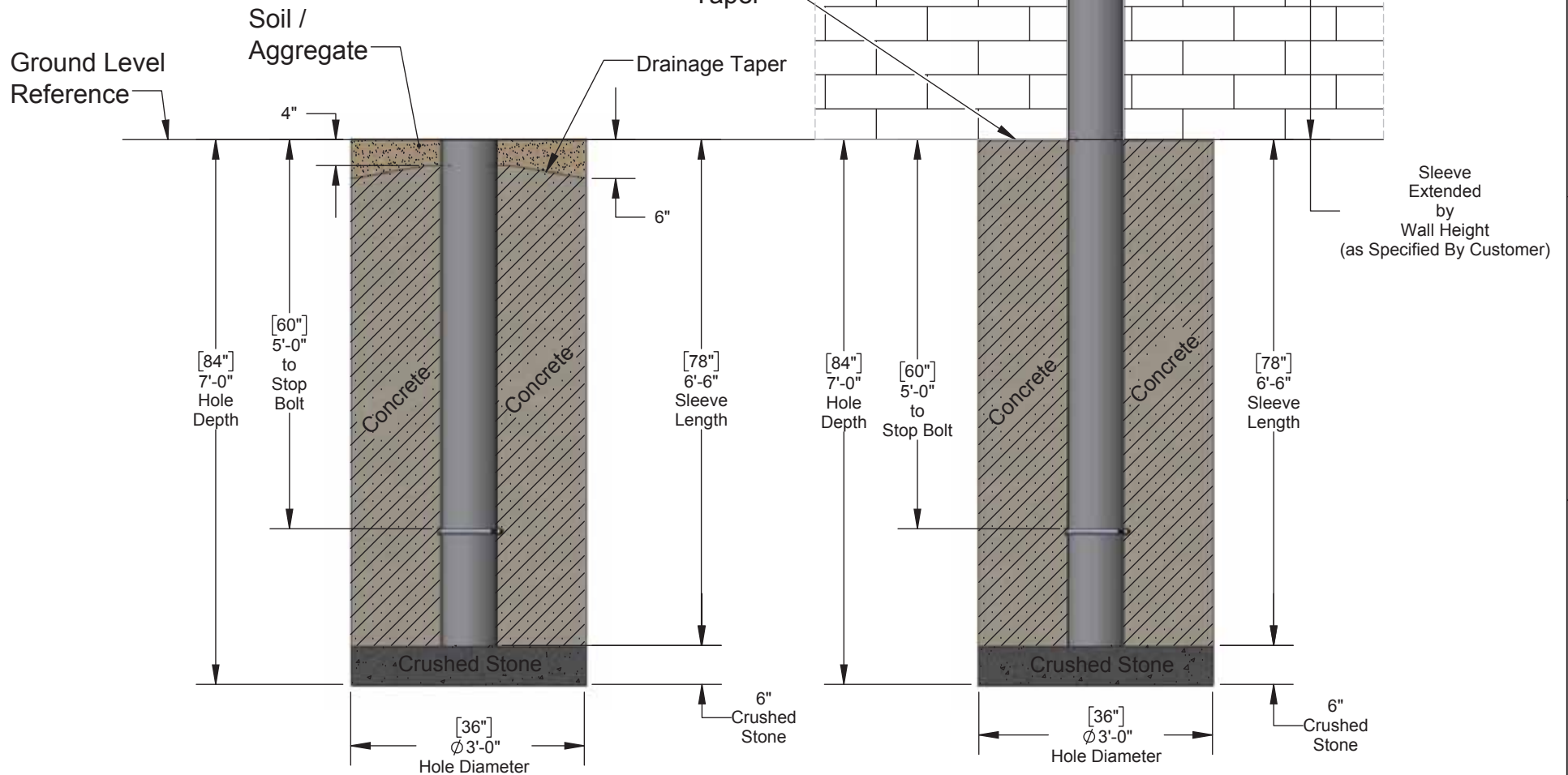
DESCRIPTION:  
**BBS - Baseball Backstopper system**

NOTE:  
Baseball Backstopper system, In Ground Configuration

MODEL: BBS-XX	CATEGORY: <b>CUSTOMER</b>	DATE: 2/16/2016
------------------	------------------------------	--------------------

DWN. BY: NR	CAD FILE: BBS Config Packet	DWG. NO. BBS-CFG-C-003
----------------	--------------------------------	---------------------------

# BBS-35 Ground Sleeve Specifications



Standard Ground Sleeve & Footing

Custom Ground Sleeve & Footing

Note: \*\*Consult Local Codes

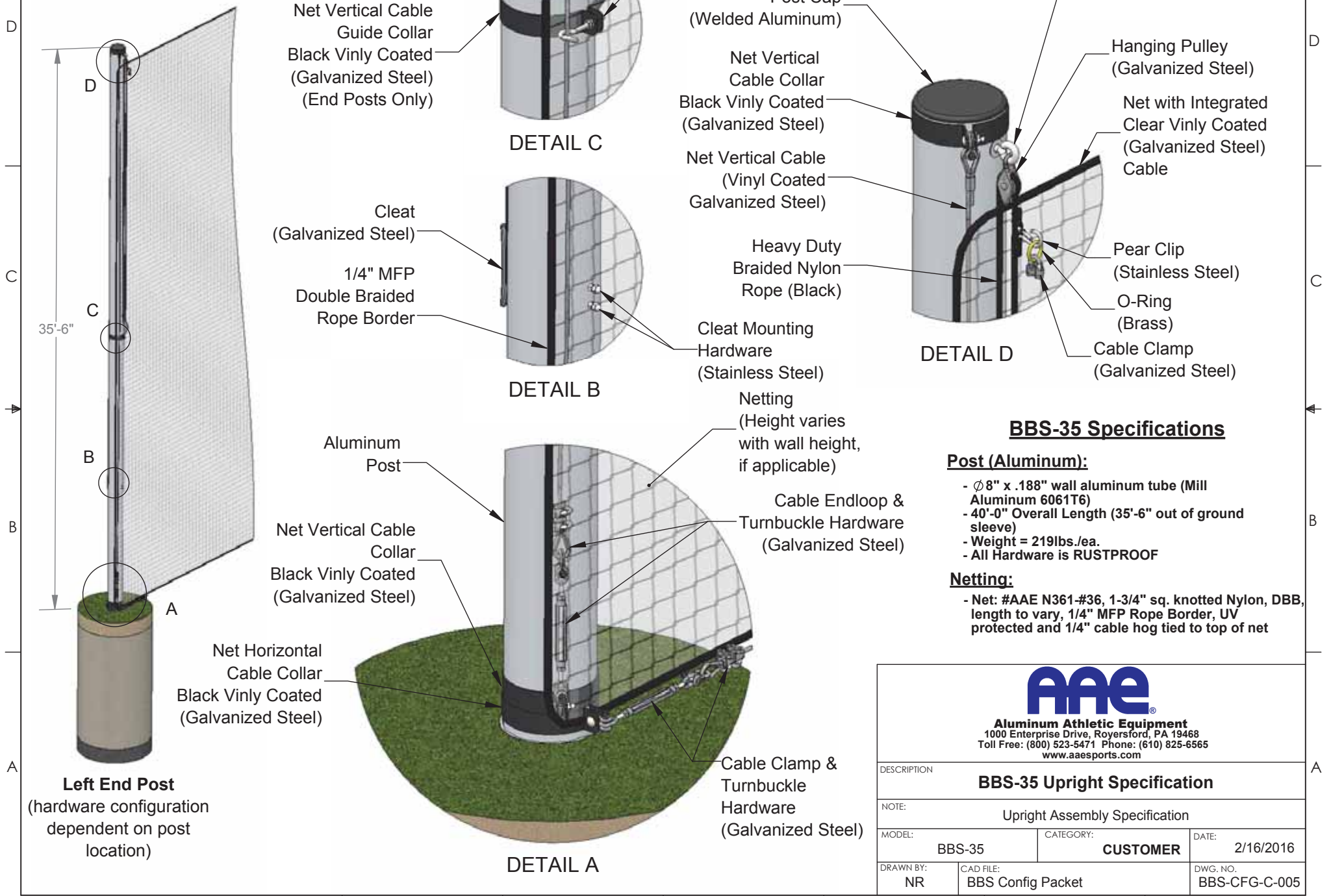


**Aluminum Athletic Equipment**  
1000 Enterprise Drive, Royersford, PA 19468  
Toll Free: (800) 523-5471 Phone: (610) 825-6565  
www.aaesports.com

DESCRIPTION		
<b>BBS-35 Ground Sleeve Specification</b>		
NOTE: Ground Sleeve/Concrete Anchor Installation Specification		
MODEL:	CATEGORY:	DATE:
BBS-35	<b>CUSTOMER</b>	2/16/2016
DRAWN BY:	CAD FILE:	DWG. NO.:
NR	BBS Config Packet	BBS-CFG-C-004



# BBS-35 Upright Specifications



## BBS-35 Specifications

### Post (Aluminum):

- $\varnothing 8"$  x .188" wall aluminum tube (Mill Aluminum 6061T6)
- 40'-0" Overall Length (35'-6" out of ground sleeve)
- Weight = 219lbs./ea.
- All Hardware is RUSTPROOF

### Netting:

- Net: #AAE N361-#36, 1-3/4" sq. knotted Nylon, DBB, length to vary, 1/4" MFP Rope Border, UV protected and 1/4" cable hog tied to top of net



**Aluminum Athletic Equipment**  
1000 Enterprise Drive, Royersford, PA 19468  
Toll Free: (800) 523-5471 Phone: (610) 825-6565  
www.aaesports.com

DESCRIPTION			
<b>BBS-35 Upright Specification</b>			
NOTE: Upright Assembly Specification			
MODEL:	BBS-35	CATEGORY:	CUSTOMER
			DATE: 2/16/2016
DRAWN BY:	NR	CAD FILE:	BBS Config Packet
			DWG. NO. BBS-CFG-C-005