

# BBS - Layout Guideline Sheet



D

C

B

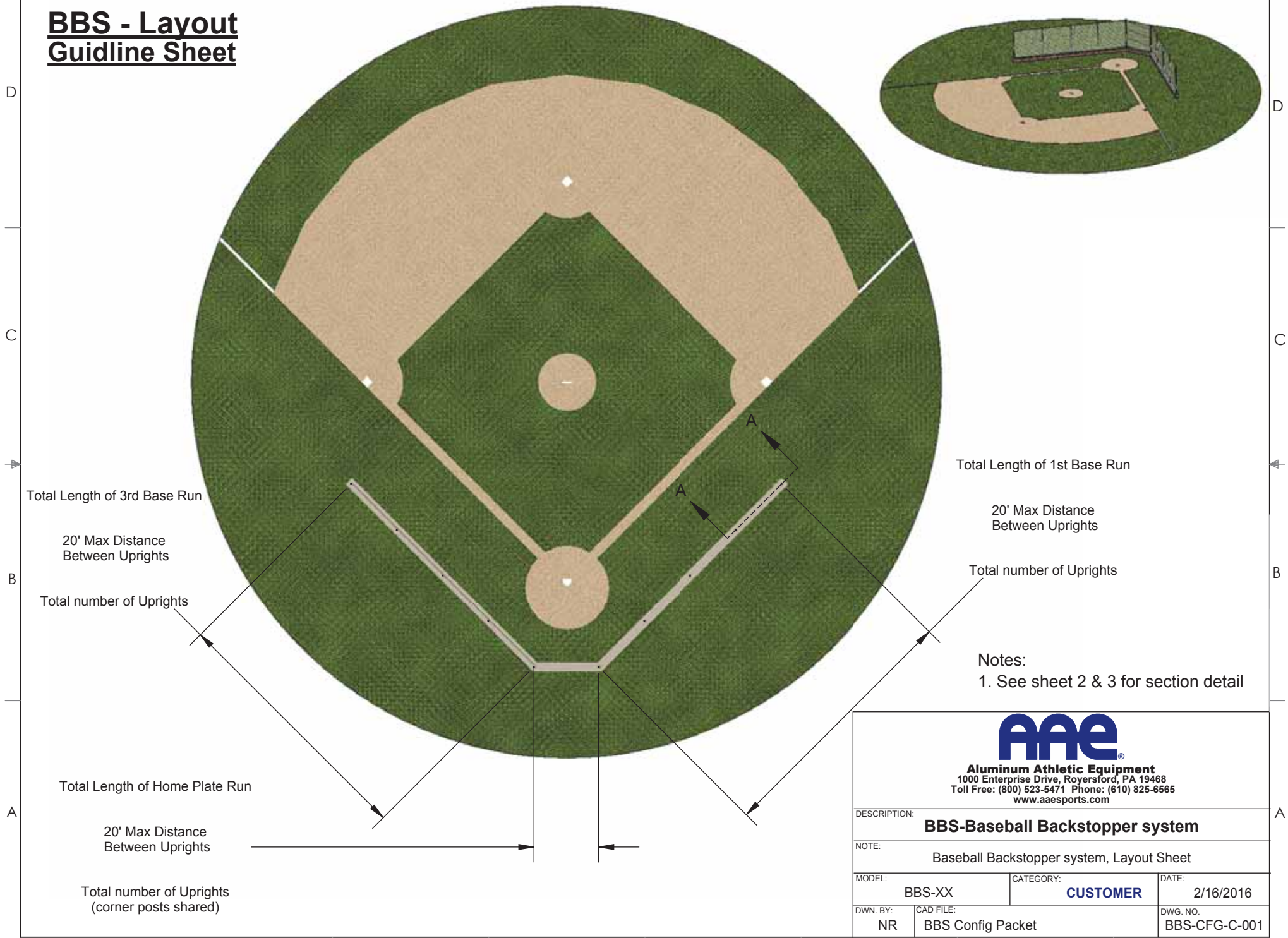
A

D

C

B

A



Total Length of 1st Base Run

20' Max Distance  
Between Uprights

Total number of Uprights

Notes:  
1. See sheet 2 & 3 for section detail

Total Length of 3rd Base Run

20' Max Distance  
Between Uprights

Total number of Uprights

Total Length of Home Plate Run

20' Max Distance  
Between Uprights

Total number of Uprights  
(corner posts shared)



**Aluminum Athletic Equipment**  
1000 Enterprise Drive, Royersford, PA 19468  
Toll Free: (800) 523-5471 Phone: (610) 825-6565  
www.aaesports.com

DESCRIPTION:		
<b>BBS-Baseball Backstopper system</b>		
NOTE: Baseball Backstopper system, Layout Sheet		
MODEL:	CATEGORY:	DATE:
BBS-XX	<b>CUSTOMER</b>	2/16/2016
DWN. BY:	CAD FILE:	DWG. NO.:
NR	BBS Config Packet	BBS-CFG-C-001

6

5

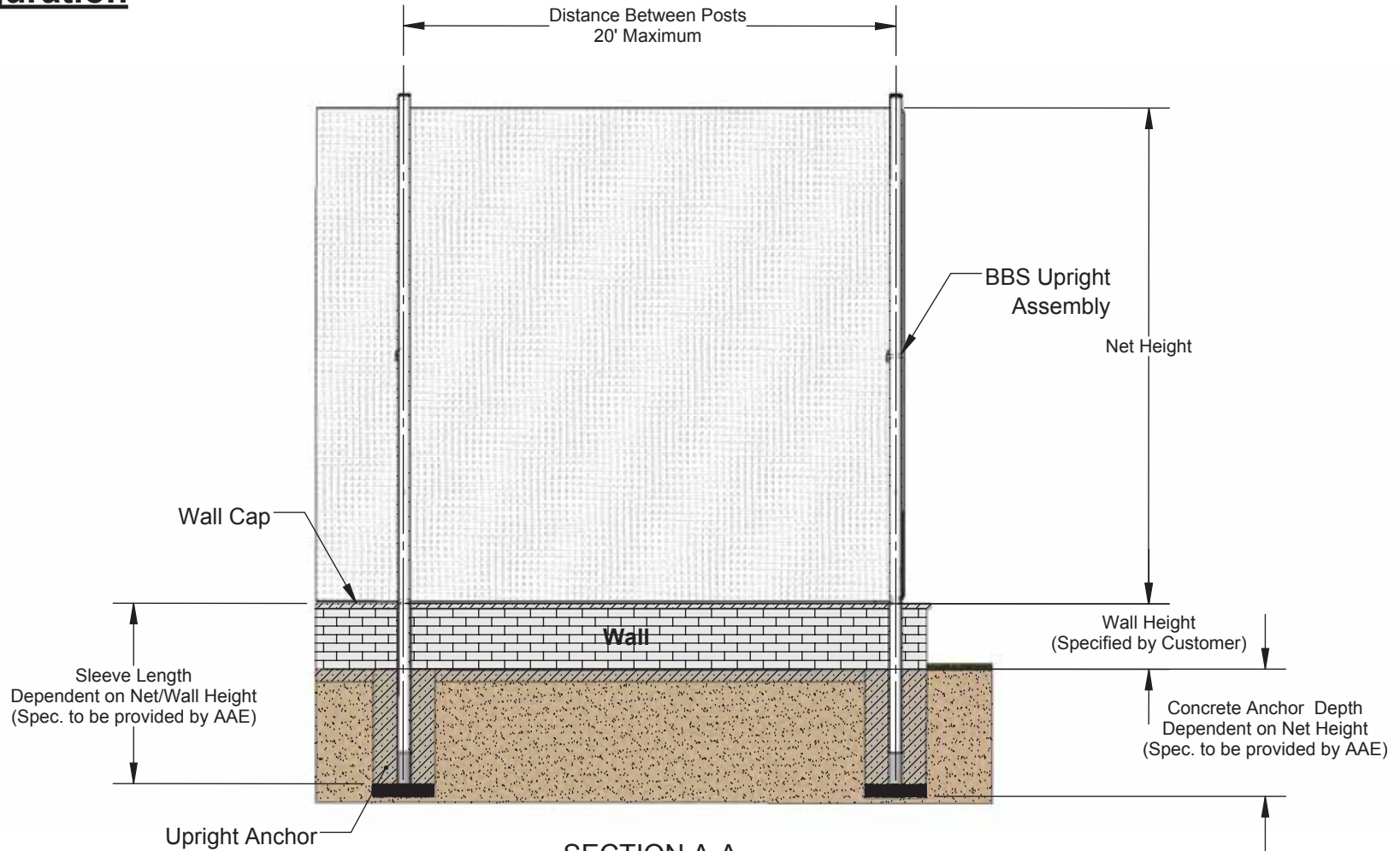
4

3

2

1

# BBS - In Wall Configuration



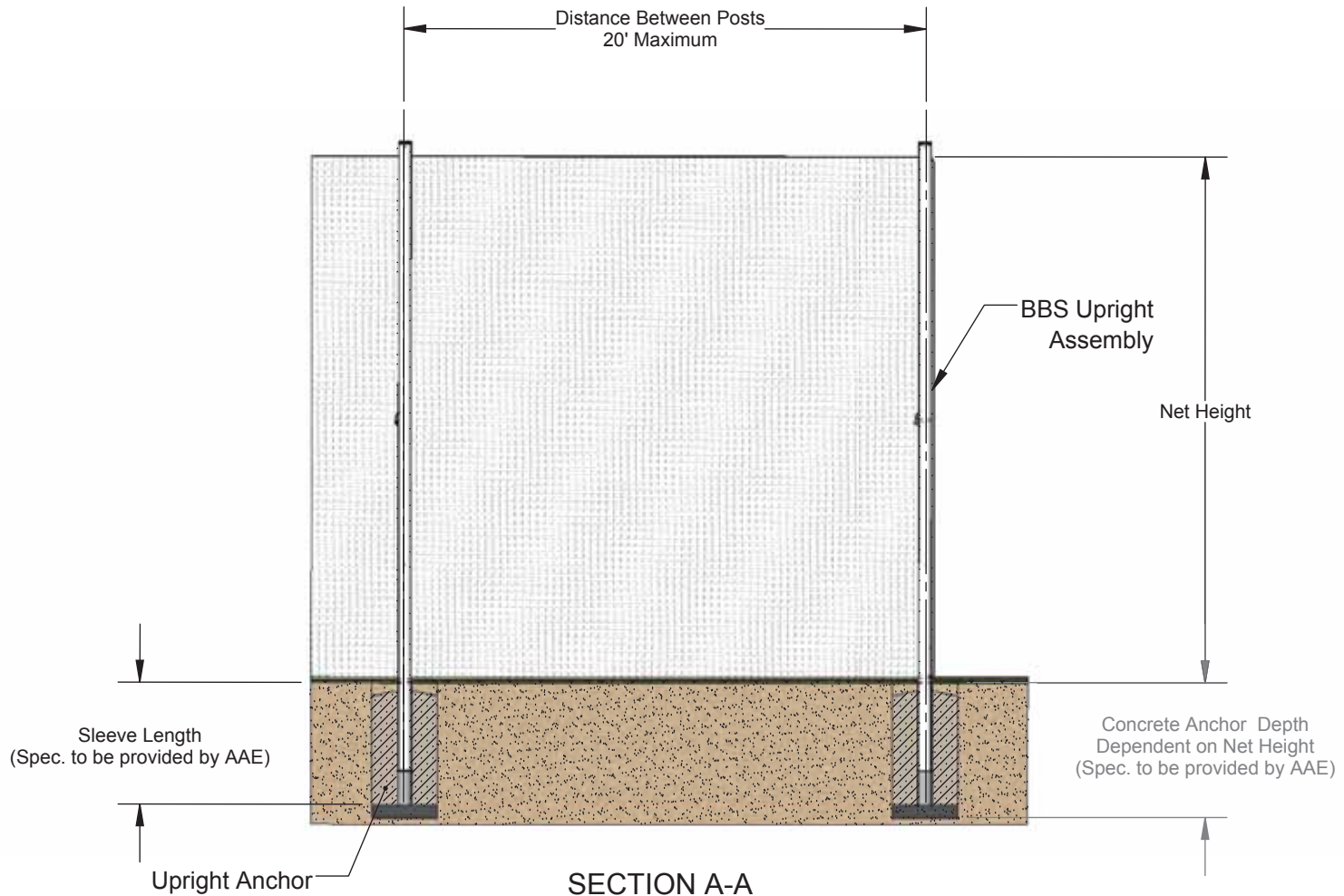
SECTION A-A  
NOT TO SCALE



**Aluminum Athletic Equipment**  
1000 Enterprise Drive, Royersford, PA 19468  
Toll Free: (800) 523-5471 Phone: (610) 825-6565  
www.aaesports.com

DESCRIPTION:		
<b>BBS - Baseball Backstopper system</b>		
NOTE: Baseball Backstopper system, In wall configuration		
MODEL:	CATEGORY:	DATE:
BBS-XX	<b>CUSTOMER</b>	2/16/2016
DWN. BY:	CAD FILE:	DWG. NO.:
NR	BBS Config Packet	BBS-CFG-C-002

# BBS - In Ground Configuration



SECTION A-A  
NOT TO SCALE

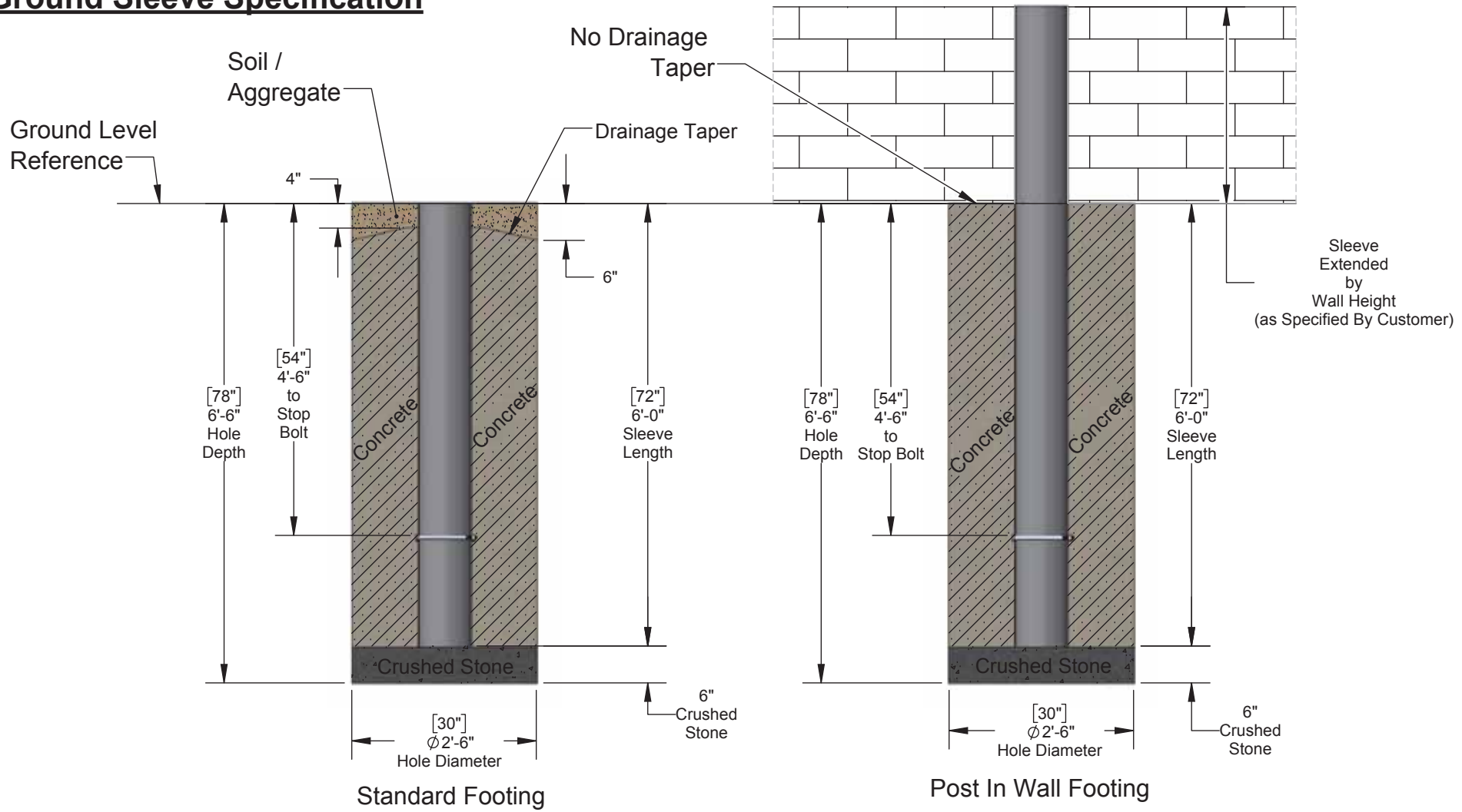


**Aluminum Athletic Equipment**  
 1000 Enterprise Drive, Royersford, PA 19468  
 Toll Free: (800) 523-5471 Phone: (610) 825-6565  
[www.aaesports.com](http://www.aaesports.com)

DESCRIPTION:		
<b>BBS - Baseball Backstopper system</b>		
NOTE: Baseball Backstopper system, In Ground Configuration		
MODEL:	CATEGORY:	DATE:
BBS-XX	<b>CUSTOMER</b>	2/16/2016
DWN. BY:	CAD FILE:	DWG. NO.:
NR	BBS Config Packet	BBS-CFG-C-003

# BBS-30 Ground Sleeve Specification

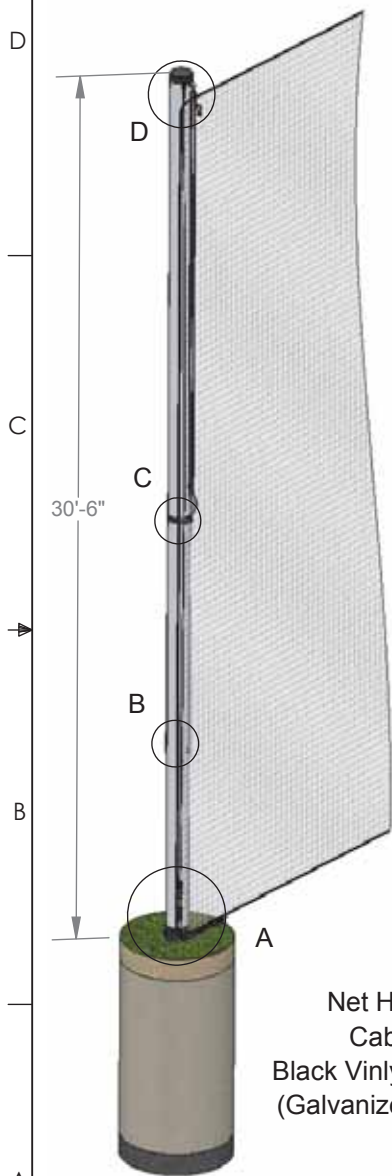
D  
C  
B  
A



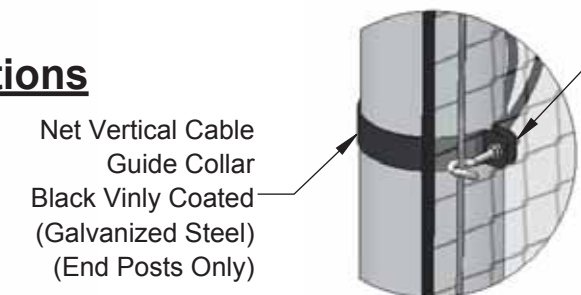
Note: \*\*Consult Local Codes

 <b>Aluminum Athletic Equipment</b> 1000 Enterprise Drive, Royersford, PA 19468 Toll Free: (800) 523-5471 Phone: (610) 825-6565 <a href="http://www.aasports.com">www.aasports.com</a>		
DESCRIPTION		
<b>BBS-30 Ground sleeve Specification</b>		
NOTE: Ground Sleeve/Concrete Anchor Installation Specification		
MODEL:	CATEGORY:	DATE:
BBS-30	<b>CUSTOMER</b>	2/16/2016
DRAWN BY:	CAD FILE:	DWG. NO.:
NR	BBS Config Packet	BBS-CFG-C-004

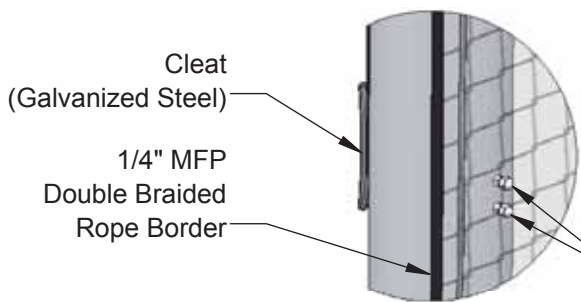
# BBS-30 Upright Specifications



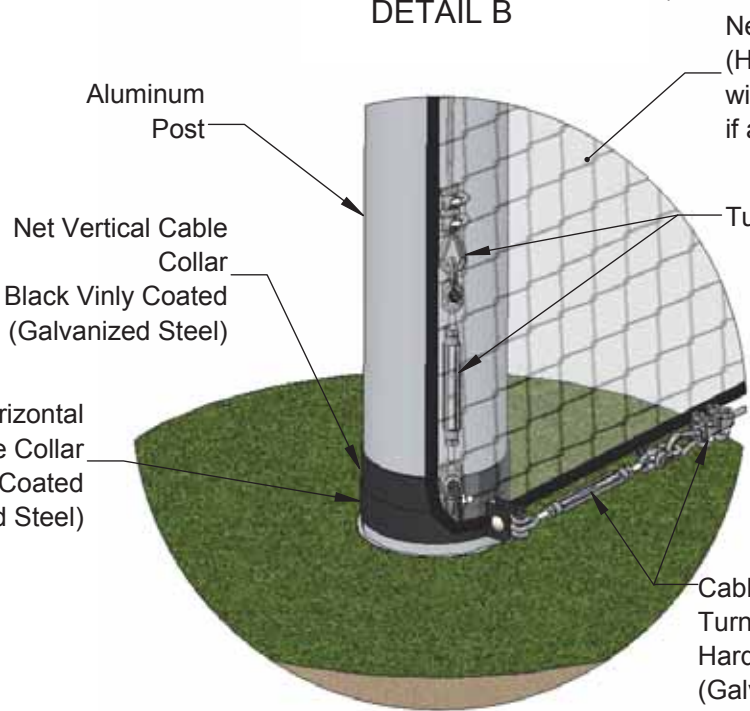
**Left End Post**  
(hardware configuration dependent on post location)



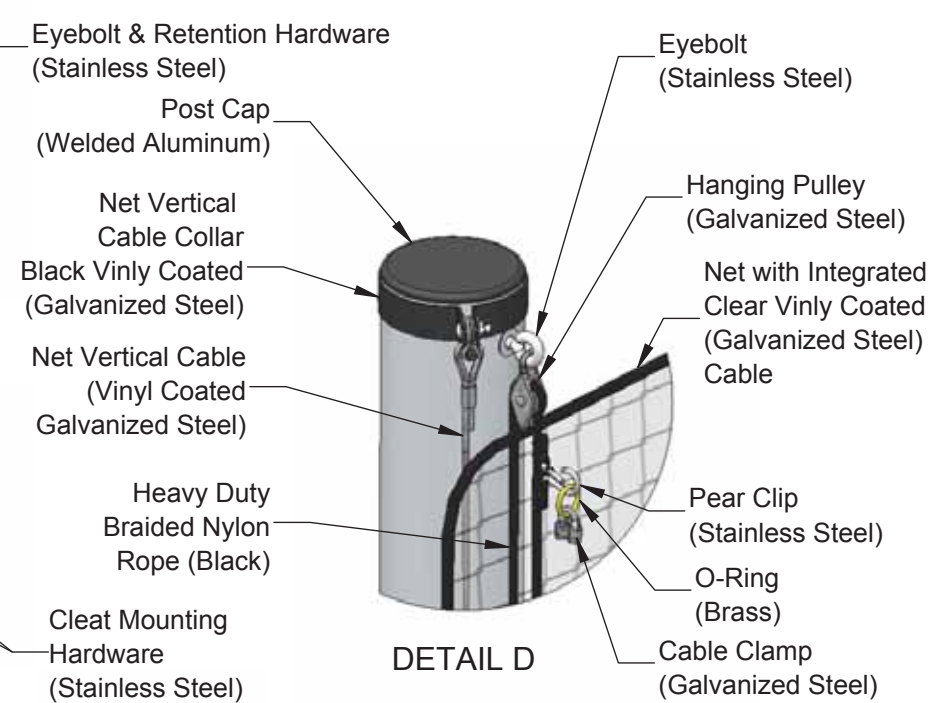
**DETAIL C**



**DETAIL B**



**DETAIL A**



**DETAIL D**

## BBS-30 Specifications

### Post (Aluminum):

- $\varnothing 8''$  x .188" wall aluminum tube (Mill Aluminum 6061T6)
- 35'-0" Overall Length (30'-6" out of ground sleeve)
- Weight = 190lbs./ea.
- All Hardware is RUSTPROOF

### Netting:

- Net: #AAE N361-#36, 1-3/4" sq. knotted Nylon, DBB, length to vary, 1/4" MFP Rope Border, UV protected and 1/4" cable hog tied to top of net



**Aluminum Athletic Equipment**  
1000 Enterprise Drive, Royersford, PA 19468  
Toll Free: (800) 523-5471 Phone: (610) 825-6565  
www.aaesports.com

DESCRIPTION			
<b>BBS-30 Upright Specification</b>			
NOTE: Upright Assembly Specification			
MODEL:	BBS-30	CATEGORY:	CUSTOMER
DATE:			2/16/2016
DRAWN BY:	NR	CAD FILE:	BBS Config Packet
DWG. NO.:			BBS-CFG-C-005